



SINGAPORE NATIONAL 420 CHAMPIONSHIP

04 – 08 June 2008

National Sailing Centre, Singapore

Organising Authority: Singapore Sailing Federation

NOTICE OF RACE

1 RULES

- 1.1 The regatta will be governed by the rules as defined in *The Racing Rules of Sailing*.
- 1.2 No national authority prescriptions will apply.

2 ADVERTISING

Advertising will be restricted to Category C.

3 ELIGIBILITY AND ENTRY

- 3.1 The regatta is open to all boats of the 420 class who are members of a club affiliated to SingaporeSailing or in the case of international entrants are members of a club affiliated to their own national authority.
- 3.2 All Singaporean competitors must have at least SingaporeSailing Level 2 Proficiency certification.
- 3.3 Eligible boats may enter by completing the attached form and sending it, together with the required fee, to

Singapore Sailing Federation
1500 East Coast Parkway
National Sailing Centre
Singapore 468963
Tel: +65 6444 4555
Fax: +65 6448 0485
Website: www.sailing.org.sg

by the closing date, **28 May 2008**.

Foreign entrants may submit their entry by email to info@singaporesailing.org.sg.
Payment of entry fees for foreign entrants can be made upon arrival.

- 3.4 Late entries may be accepted at the discretion of the Organising Authority and

shall be subjected to a late entry fee.

- 3.5 A minimum of 6 entries is required to form an event.

4 FEES

The required fees (inclusive of GST) are as follows:

<u>Class</u>	<u>Fee</u>	<u>Late Entry Fee</u>
420	S\$128.40	S\$192.60

The fees are non-refundable.

5 SCHEDULE

- 5.1 Dates of Racing:
04 – 08 Jun 2008 Racing
- 5.2 There will be no limit to the number of races per day.
- 5.3 The scheduled time for the warning signal of the first race each day is 1100hrs.
- 5.4 On the last day of the regatta no warning signal will be made after 1530hrs.

6 SAILING INSTRUCTIONS

The sailing instructions will be available after 28 May 2008 at the National Sailing Centre.

7 VENUE

Attachment 1 shows the location of the racing areas.

8 THE COURSES

The diagrams in Attachment 2 show the courses, the order in which marks are to be passed, and the side on which each mark is to be left.

9 PENALTY SYSTEM

- 9.1 Appendix P will apply, with the following change:
- Rule P2.1 is changed such that on the first protest, if a boat is protested after she has finished, she will be given a scoring penalty of 6 points, without a hearing. If her score results in a score worse than DSQ, the penalty will be corresponding to DSQ.
- 9.2 Action taken under Appendix P will not be grounds for redress by a competitor.

10 SCORING

- 10.1 A maximum of 12 races are scheduled. A minimum of 5 races are required to be completed to constitute a series.
- 10.2 When fewer than 7 races have been completed, a boat's series score will be the total of her race scores.
- 10.3 When 7 to 8 races have been completed, a boat's series score will be the total of her scores excluding her worst score.
- 10.4 When 9 or more races have been completed, a boat's series score will be the total of her scores excluding her two worst scores.

11 RADIO COMMUNICATION

A boat shall neither make radio transmissions while racing nor receive radio communications not available to all boats. This restriction also applies to mobile telephones.

12 PRIZES

Prizes will be given as follows:

420 (with Spinnaker)

Overall Challenge Trophy	1 st
Open Division	1 st to 3 rd
Women's Division	No. of prizes will be decided after closing date

420 (Non-Spinnaker)

No. of prizes will be decided after closing date

13 DISCLAIMER OF LIABILITY

Competitors participate in the regatta entirely at their own risk, see Part 1 Fundamental Rules No. 4, Decision to Race. The organising authority will not accept any liability for material damage or personal injury or death sustained in conjunction with or prior to, during, or after the regatta.

14 INSURANCE

All competitors are required to have appropriate insurance coverage.

15 CHARTER BOATS

A limited number of charter boats (without sails) will be available for international entrants. Please contact SingaporeSailing for boat charter reservations.

16 ACCOMMODATION

- Grand Mercure Roxy Hotel
50 East Coast Road Roxy Sq (via Marine Parade Rd)
Singapore 428769
(10 minutes away by taxi from the National Sailing Centre)
Tel: +65 63448000
Website: www.mercure.com/mercure/fichehotel/gb/mer/3610/fiche_hotel.shtml

- Lion City Hotel
15 Tanjong Katong Road
Singapore 436950
(20 minutes away by taxi from the National Sailing Centre)
Tel: +65 6744 8111
Website: <http://www.lioncityhotel.com.sg>

- Island Resort (Chalet-style accommodation)
1110 East Coast Parkway
Singapore 449880
(10 minutes away by taxi from the National Sailing Centre)
Tel: +65 6448 4747
Website: <http://www.islandresort.com.sg>

Participants are advised to book early as the month of June is peak season.

17 FURTHER INFORMATION

For further information, please contact:

Singapore Sailing Federation
1500 East Coast Parkway
National Sailing Centre
Singapore 468963
Tel: +65 6444 4555
Fax: +65 6448 0485
Website: www.sailing.org.sg
Email: info@singaporesailing.org.sg



**Singapore National 420 Championship
04 – 08 Jun 2008, National Sailing Centre
Entry Form**

Attn: Singapore Sailing Federation
1500 East Coast Parkway
National Sailing Centre
Singapore 468963

Tel: +65 6444 4555
Fax: +65 6448 0485
Website: www.sailing.org.sg

Helm's Name: _____
(Enter full name)

NRIC: _____

Class of Boat: _____
(Indicate Spinnaker / Non-Spinnaker)

Sail No: _____

School: _____

Club: _____

Home Addr: _____

Date of Birth: _____

Sex: _____

Tel No: _____

Email: _____

Mobile: _____

Crew's Name: _____

Entry Fees

The entry fees (inclusive of GST) will be non-refundable:

	<u>By 28 May</u>	<u>After 28 May</u>
420	S\$128.40	S\$192.60

Enclosed is S\$_____ being payment for the entry fee.

Declaration by competitor

I agree to be bound by The Racing Rules of Sailing; the Notice of Race; the Sailing Instructions; and any subsequent changes/addendum made the Organising Authority.

I hereby declare that I take part in the championship entirely at my own risk and I will not hold the Organising Authority and its officials and volunteers liable for any damage, loss or injury which may occur.

Helm's
Signature

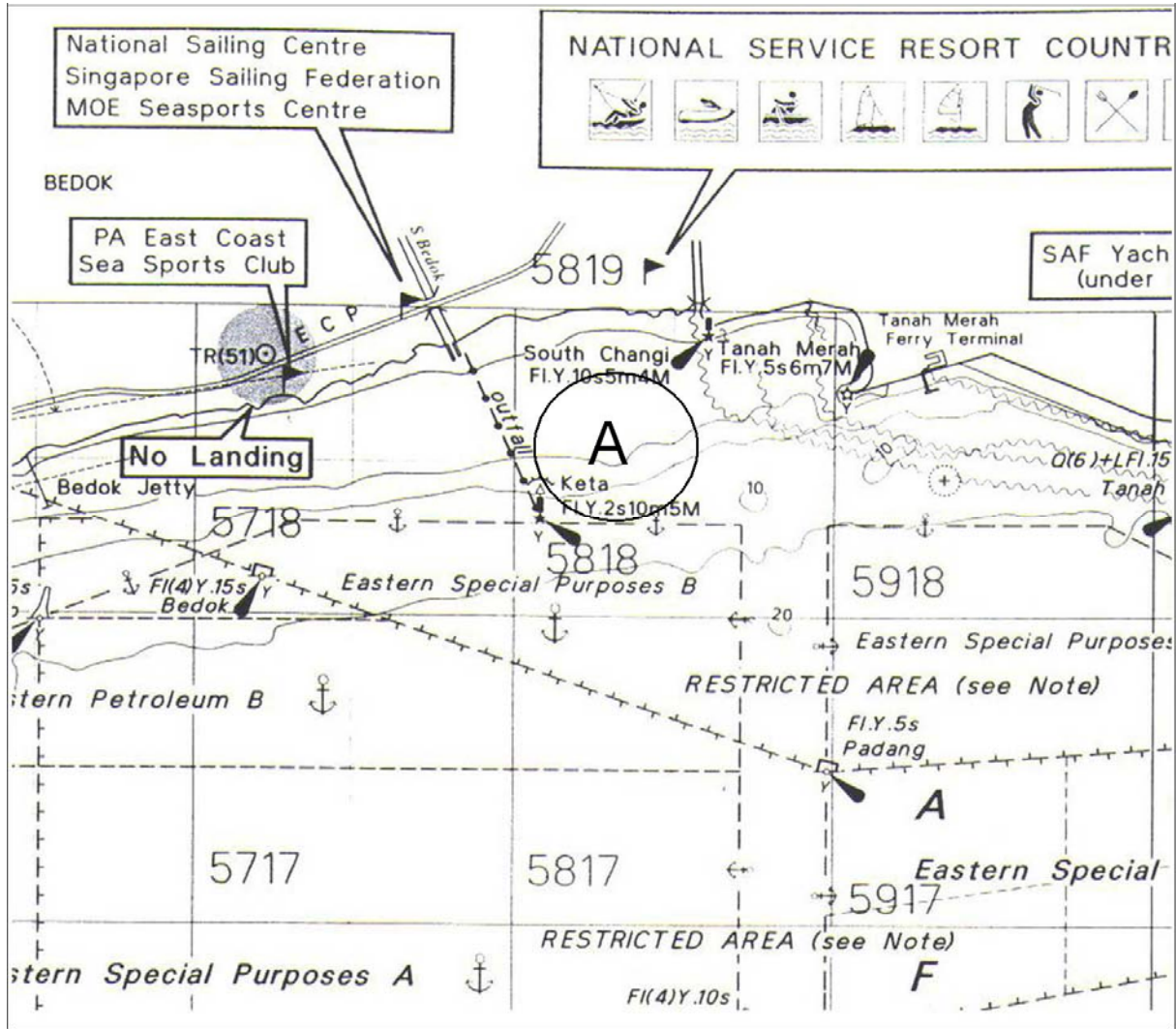
Parent's Signature
(Required for sailors
21 years old & below)

Crew's
Signature

Parent's Signature
(Required for sailors
21 years old & below)

ATTACHMENT 1

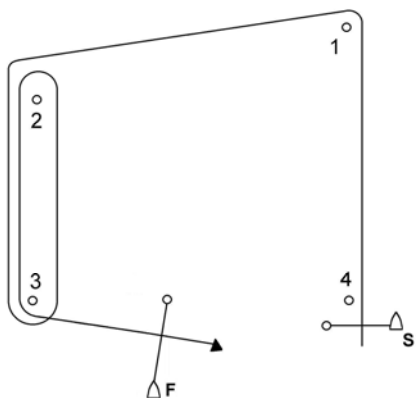
RACING AREAS



ATTACHMENT 2 - COURSES

ALL COURSE AREAS

Trapezoid Course



Trapezoid Courses (All marks to port)

Course Flag “I1” (Inner Loop – 1 lap)

Start, Mark 1, Mark 4, Mark 1, Mark 2, Mark 3, Finish

Course Flag “I2” (Inner Loop – 2 laps)

Start, Mark 1, Mark 4, Mark 1, Mark 4, Mark 1, Mark 2, Mark 3, Finish

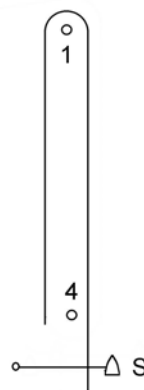
Course Flag “O1” (Outer Loop – 1 lap)

Start, Mark 1, Mark 2, Mark 3, Mark 2, Mark 3, Finish

Course Flag “O2” (Outer Loop – 2 laps)

Start, Mark 1, Mark 2, Mark 3, Mark 2, Mark 3, Mark 2, Mark 3, Finish

Windward / Leeward Course



Windward / Leeward Courses (All marks to port)

Course Flag “W1”

Start, Mark 1, Mark 4, Mark 1, Finish

Course Flag “W2”

Start, Mark 1, Mark 4, Mark 1, Mark 4, Mark 1, Finish