



# SENTOSA NATIONAL OPTIMIST & BYTE CHAMPIONSHIPS

11 – 15 June 2008

National Sailing Centre, Singapore

Organising Authority: Singapore Sailing Federation

## NOTICE OF RACE

### 1 RULES

- 1.1 The regatta will be governed by the rules as defined in *The Racing Rules of Sailing*.
- 1.2 No national authority prescriptions will apply.

### 2 ADVERTISING

Advertising will be restricted to Category C.

### 3 ELIGIBILITY AND ENTRY

- 3.1 The regatta is open to all boats of the Optimist and Byte classes who are members of a club affiliated to SingaporeSailing, or in the case of international entrants, are members of a club affiliated to their own national authority.
- 3.2 Singaporean Optimist competitors must have at least SOF Opti-Racer certification.  
Singaporean Byte competitors must have at least SingaporeSailing Level 1 Proficiency certification.
- 3.3 Eligible boats may enter by completing the attached form and sending it, together with the required fee, to

Singapore Sailing Federation  
1500 East Coast Parkway  
National Sailing Centre  
Singapore 468963  
Tel: +65 6444 4555  
Fax: +65 6448 0485  
Website: [www.sailing.org.sg](http://www.sailing.org.sg)

Event Sponsor:

**sentosa**

A SingaporeSailing Event

[www.sailing.org.sg](http://www.sailing.org.sg)

by the closing date, **04 June 2008**.

Foreign entrants may submit their entry by email to [info@singaporesailing.org.sg](mailto:info@singaporesailing.org.sg). Payment of entry fees for foreign entrants can be made upon arrival.

3.4 Late entries may be accepted at the discretion of the Organising Authority and shall be subjected to a late entry fee.

3.5 A minimum of 6 entries is required to form an event.

#### **4 FEES**

4.1 The required fees (inclusive of GST) are as follows:

| <u>Class</u> | <u>Fee</u> | <u>Late Entry Fee</u> |
|--------------|------------|-----------------------|
| Optimist     | \$64.20    | \$96.30               |
| Byte         | \$64.20    | \$96.30               |

4.2 The fees will be non-refundable.

#### **5 QUALIFYING SERIES AND FINAL SERIES**

5.1 Where more than 80 entries in any class are received at the close of entries, the regatta will consist of a qualifying series and a final series for that class.

5.2 For the qualifying series, the entire fleet will be divided into 4 groups. The seeding of boats into the 4 groups will be based on the current National Ranking where available or another method as determined by the Organising Authority. The seeding will be done as soon as possible after the closing of entries and shall not be subject to protest. This changes rule 60.1(b).

5.3 Each race shall consist of 2 groups racing together and where possible each group shall race each other group an equal number of times.

5.4 Groups may be started in any order however the Race Committee will attempt to start as follows:

| <b>Race No.</b> | <b>Groups</b> | <b>Colours</b> | <b>Race No.</b> | <b>Groups</b> | <b>Colours</b> |
|-----------------|---------------|----------------|-----------------|---------------|----------------|
| Race 1A         | 1 & 2         | White &        | Race 1B         | 3 & 4         | Yellow &       |

*Event Sponsor:*

**sentosa**

A SingaporeSailing Event  
[www.sailing.org.sg](http://www.sailing.org.sg)

|          |       |                |         |       |                |
|----------|-------|----------------|---------|-------|----------------|
|          |       | Brown          |         |       | Pink           |
| Race 2A  | 2 & 4 | Brown & Pink   | Race 2B | 1 & 3 | White & Yellow |
| Race 3A  | 1 & 4 | White & Pink   | Race 3B | 2 & 3 | Brown & Yellow |
| Race 4 A | 3 & 4 | Yellow & Pink  | Race 4B | 1 & 2 | White & Brown  |
| Race 5A  | 1 & 3 | White & Yellow | Race 5B | 2 & 4 | Brown & Pink   |

- 5.5 The Group Flags shall be displayed in place of Class Flags. All boats will display a coloured ribbon (corresponding with the colour of their groups) attached securely to the top of their mast or sprit. The organiser will provide these ribbons.
- 5.6 The group flags and colours are:  
Group 1 – White  
Group 2 – Brown  
Group 3 – Yellow  
Group 4 – Pink
- 5.7 When more than 4 groups are required, appropriate measures will be taken.
- 5.8 Boats will be assigned to final-series fleets Gold, Silver, Bronze, Emerald, etc., on the basis of their ranks in the qualifying-series. The final-series fleets will have, as nearly as possible, equal size but so that the Silver fleet is not larger than the Gold fleet, etc. Boats with the best qualifying-series ranks will race all final-series races in the Gold fleet, boats with the next-best qualifying-series ranks will race in the Silver fleet, etc.
- 5.9 Any recalculation of qualifying-series ranking after boats have been assigned to final-series fleets will not affect the assignments except that a redress decision may promote a boat to a higher fleet.

## 6 SCHEDULE

- 6.1 11 – 15 Jun 2008 Racing
- 6.2 There will be no limit to the number of races per day.
- 6.3 The scheduled time of the warning signal for the first race each day is 1100hrs.
- 6.4 On the last day of the regatta no warning signal will be made after 1530hrs.

## 7 SAILING INSTRUCTIONS

The sailing instructions will be available after the closing date at the National Sailing Centre.

*Event Sponsor:*

**sentosa**

A SingaporeSailing Event  
[www.sailing.org.sg](http://www.sailing.org.sg)

## **8 VENUE**

Attachment 1 shows the location of the racing areas.

## **9 THE COURSES**

The diagrams in Attachment 2 show the courses, the order in which marks are to be passed, and the side on which each mark is to be left.

## **10 PENALTY SYSTEM**

10.1 Appendix P will apply, with the following change:

Rule P2.1 is changed such that on the first protest, if a boat is protested after she has finished, she will be given a scoring penalty of 8 points, without a hearing. If her score results in a score worse than DSQ, the penalty will be corresponding to DSQ.

10.2 Rule P2.3 will not apply and rule P2.2 is changed so that it will apply to any protest after the first one.

10.3 Action taken under Appendix P will not be grounds for redress by a competitor.

## **11 SCORING**

11.1 A maximum of 12 races are scheduled.

11.2 When a qualifying series and a final series are organised,

- (a) At least 5 qualifying races are required to be completed for each group to constitute the qualifying series and to enter the final series.
- (b) A minimum of 5 qualifying races are required to be completed to constitute a regatta.
- (c) The final series shall consist of all remaining races not sailed in the qualifying series. All the race scores in the qualifying and final series shall be used in determining the final series score, less any discards allowed.
- (d) When 7 or more qualifying and final series races (combined) have been completed for a particular fleet, a boat's series score in that fleet shall be the total of her race scores excluding her worst score.
- (e) When 9 or more qualifying and final series races (combined) have been completed for a particular fleet, a boat's series score in that fleet shall be the total of her race scores excluding her 2 worst scores.
- (f) The number of final series races need not be equal for all final series groups.

11.3 When no qualifying series is organised, a minimum of 5 races are required to be completed to constitute a series.

- (a) When fewer than 7 races have been completed, a boat's series

*Event Sponsor:*

**sentosa**

A SingaporeSailing Event

[www.sailing.org.sg](http://www.sailing.org.sg)

score will be the total of her race scores.

- (b) When from 7 to 8 races have been completed, a boat's series score will be the total of her race scores excluding her worst score.
- (c) When 9 or more races have been completed, a boat's series score will be the total of her race scores excluding her two worst scores.

11.4 There will be only one final official ranking list for the regatta and for each class. Boats in the gold fleet will rank higher than those in the silver fleet, who shall in turn be ranked higher than those in bronze fleet, etc.

## 12 SUPPORT BOATS

Support boats shall be identified by a white flag with the letter corresponding to the course area.

## 13 BERTHING

Boats shall be kept in their assigned places in the boat park.

## 14 RADIO COMMUNICATION

A boat shall neither make radio transmissions while racing nor receive radio communications not available to all boats. This restriction also applies to mobile telephones.

## 15 PRIZES

### 15.1 Optimist

|                                     |                                    |
|-------------------------------------|------------------------------------|
| <u>Gold Fleet</u>                   | 1 <sup>st</sup> to 5 <sup>th</sup> |
| Boys Challenge Trophy               | 1 <sup>st</sup> Boy                |
| Girls Challenge Trophy              | 1 <sup>st</sup> Girl               |
| <u>Silver Fleet</u>                 | 1 <sup>st</sup> to 5 <sup>th</sup> |
| <u>Bronze Fleet</u> (If applicable) | 1 <sup>st</sup> to 5 <sup>th</sup> |

### 15.2 Byte

|                        |                                    |
|------------------------|------------------------------------|
| <u>Gold Fleet</u>      | 1 <sup>st</sup> to 5 <sup>th</sup> |
| Boys Challenge Trophy  | 1 <sup>st</sup>                    |
| Girls Challenge Trophy | 1 <sup>st</sup>                    |
| <u>Silver Fleet</u>    | 1 <sup>st</sup> to 5 <sup>th</sup> |

## 16 DISCLAIMER OF LIABILITY

Competitors participate in the regatta entirely at their own risk, see Part 1 Fundamental Rules No. 4, Decision to Race. The organising authority will not accept any liability for material damage or personal injury or death sustained in conjunction with or prior to, during, or after the regatta.

*Event Sponsor:*

**sentosa**

A SingaporeSailing Event  
[www.sailing.org.sg](http://www.sailing.org.sg)

## 17 **INSURANCE**

All competitors are required to have appropriate insurance coverage.

## 18 **CHARTER BOATS**

A limited number of charter boats (without sails) will be available for international entrants. Please contact SingaporeSailing for boat charter reservations.

## 19 **ACCOMMODATION**

- Grand Mercure Roxy Hotel  
50 East Coast Road Roxy Sq (via Marine Parade Rd)  
Singapore 428769  
(10 minutes away by taxi from the National Sailing Centre)  
Tel: +65 63448000  
Website: [www.mercure.com/mercure/fichehotel/gb/mer/3610/fiche\\_hotel.shtml](http://www.mercure.com/mercure/fichehotel/gb/mer/3610/fiche_hotel.shtml)

- Lion City Hotel  
15 Tanjong Katong Road  
Singapore 436950  
(20 minutes away by taxi from the National Sailing Centre)  
Tel: +65 6744 8111  
Website: <http://www.lioncityhotel.com.sg>

- Island Resort (Chalet-style accommodation)  
1110 East Coast Parkway  
Singapore 449880  
(10 minutes away by taxi from the National Sailing Centre)  
Tel: +65 6448 4747  
Website: <http://www.islandresort.com.sg>

Participants are advised to book early as the month of June is peak season.

## 20 **FURTHER INFORMATION**

For further information, please contact:

Singapore Sailing Federation  
1500 East Coast Parkway  
National Sailing Centre  
Singapore 468963  
Tel: +65 6444 4555  
Fax: +65 6448 0485  
Website: [www.sailing.org.sg](http://www.sailing.org.sg)  
Email: [info@singaporesailing.org.sg](mailto:info@singaporesailing.org.sg)

*Event Sponsor:*

**sentosa**

A SingaporeSailing Event  
[www.sailing.org.sg](http://www.sailing.org.sg)



**Sentosa National Optimist & Byte Championships**  
**11 – 15 Jun 2008, National Sailing Centre**  
**Entry Form**

Attn: Singapore Sailing Federation  
1500 East Coast Parkway  
National Sailing Centre  
Singapore 468963

Tel: +65 6444 4555  
Fax: +65 6448 0485  
Website: [www.sailing.org.sg](http://www.sailing.org.sg)

Helm's Name: \_\_\_\_\_  
(Enter full name)

NRIC: \_\_\_\_\_

Class of Boat: \_\_\_\_\_

Sail No: \_\_\_\_\_

School: \_\_\_\_\_

Club: \_\_\_\_\_

Home Addr: \_\_\_\_\_

Date of Birth: \_\_\_\_\_

Sex: \_\_\_\_\_

Email: \_\_\_\_\_

Mobile: \_\_\_\_\_

**Entry Fees**

The entry fees (inclusive of GST) will be non-refundable:

|          | <u>By 04 Jun</u> | <u>After 04 Jun</u> |
|----------|------------------|---------------------|
| Optimist | \$64.20          | \$96.30             |
| Byte     | \$64.20          | \$96.30             |

Enclosed is S\$\_\_\_\_\_ being payment for the entry fee.

**Declaration by competitor**

I agree to be bound by The Racing Rules of Sailing; the Notice of Race; the Sailing Instructions; and any subsequent changes/addendum made the Organising Authority.

I hereby declare that I take part in the championship entirely at my own risk and I will not hold the Organising Authority and its officials and volunteers liable for any damage, loss or injury which may occur.

\_\_\_\_\_  
Helm's Signature

\_\_\_\_\_  
Parent's Signature  
(Required for sailors 21 years old & below)

*Event Sponsor:*

**sentosa**

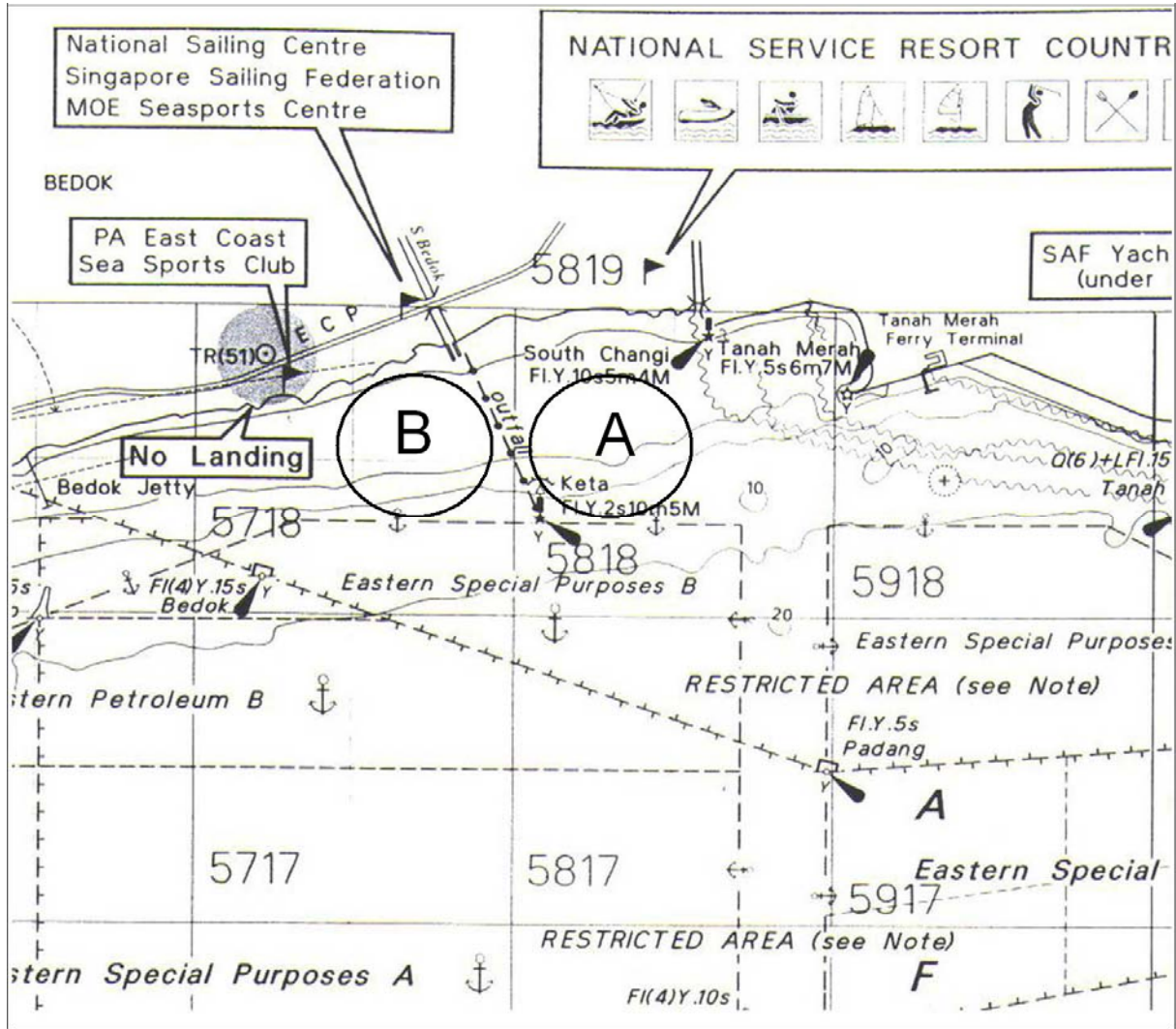
A SingaporeSailing Event  
[www.sailing.org.sg](http://www.sailing.org.sg)

**ATTACHMENT 1**

**RACING AREAS**

**COURSE AREA ALPHA – Byte**

**COURSE AREA BRAVO – Optimist**



Event Sponsor:

**sentosa**

A SingaporeSailing Event

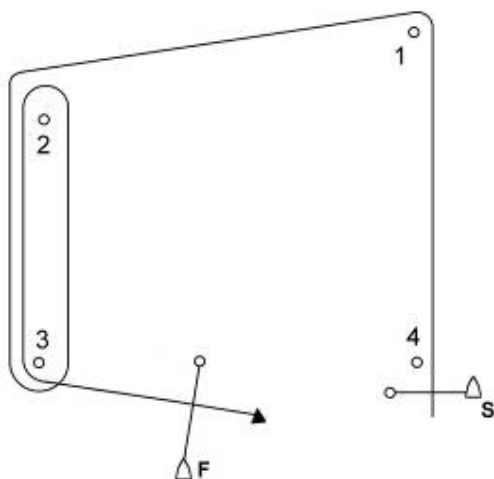
[www.sailing.org.sg](http://www.sailing.org.sg)

## ATTACHMENT 2

### COURSES

#### ALL COURSE AREAS

##### Trapezoid Course



*Trapezoid Courses (All marks to port)*

##### **Course Flag “I1” (Inner Loop – 1 lap)**

Start, Mark 1, Mark 4, Mark 1, Mark 2, Mark 3, Finish

##### **Course Flag “I2” (Inner Loop – 2 laps)**

Start, Mark 1, Mark 4, Mark 1, Mark 4, Mark 1, Mark 2, Mark 3, Finish

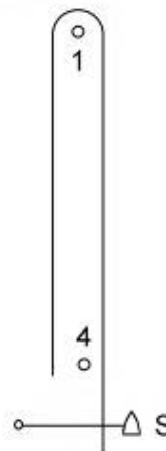
##### **Course Flag “O1” (Outer Loop – 1 lap)**

Start, Mark 1, Mark 2, Mark 3, Mark 2, Mark 3, Finish

##### **Course Flag “O2” (Outer Loop – 2 laps)**

Start, Mark 1, Mark 2, Mark 3, Mark 2, Mark 3, Mark 2, Mark 3, Finish

##### Windward / Leeward Course



*Windward / Leeward Courses (All marks to port)*

##### **Course Flag “W1”**

Start, Mark 1, Mark 4, Mark 1, Finish

##### **Course Flag “W2”**

Start, Mark 1, Mark 4, Mark 1, Mark 4, Mark 1, Finish

*Event Sponsor:*

**sentosa**

A SingaporeSailing Event

[www.sailing.org.sg](http://www.sailing.org.sg)