



# SINGAPORE NATIONAL WINDSURFING CHAMPIONSHIP

26 – 27 July 2008

National Sailing Centre, Singapore

Organising Authority: Singapore Sailing Federation

## NOTICE OF RACE

### 1 RULES

- 1.1 The regatta will be governed by the *rules* as defined in The Racing Rules of Sailing.

### 2 ADVERTISING

Advertising will be restricted to Category C.

### 3 ELIGIBILITY AND ENTRY

- 3.1 The regatta is open to all boats of the Bic Techno, Mistral One Design, RSX and Formula classes who are members of a club affiliated to SingaporeSailing or in the case of international entrants, are members of a club affiliated to their own national authority.
- 3.2 All Singaporean competitors must have at least SingaporeSailing Level 1 Windsurfing Proficiency certification.
- 3.3 Eligible boats may enter by completing the attached form and sending it, together with the required fee, to

Singapore Sailing Federation  
1500 East Coast Parkway  
National Sailing Centre  
Singapore 468963

Tel: +65 6444 4555

Website: [www.sailing.org.sg](http://www.sailing.org.sg)

by the closing date, **19 Jul 2008**.

Foreign entrants may submit their entry by email to [info@singaporesailing.org.sg](mailto:info@singaporesailing.org.sg). Payment of entry fees for foreign entrants can be made upon arrival.

- 3.4 Late entries may be accepted at the discretion of the Organising Authority and shall be subjected to a late entry fee.

- 3.5 A minimum of 6 entries for a class is required to form an event. In the case where fewer than 6 entries have been received for each of the Bic Techno, Mistral One Design and RSX classes, the entries may be combined under the Longboard category, at the discretion of the Organising Committee.

#### **4 FEES**

The entry fees (inclusive of GST) are as follows:

<u>Class</u>	<u>By 19 Jul</u>	<u>After 19 Jul</u>
Bic Techno	\$32.10	\$48.15
Mistral One Design	\$32.10	\$48.15
RSX	\$32.10	\$48.15
Formula	\$32.10	\$48.15

The fees are non-refundable.

#### **5 SCHEDULE**

5.1	<i>Dates</i>	<i>All classes</i>	<i>Time of 1<sup>st</sup> Warning Signal</i>
	26 Jul 2008	Racing	1430 hrs
	27 Jul 2008	Racing	1100 hrs

- 5.2 There will be no limit to the number of races per day.
- 5.3 On the last day of the regatta no warning signal will be made after 1530 hours.

#### **6 SAILING INSTRUCTIONS**

The sailing instructions will be available after the closing date at the National Sailing Centre.

#### **7 VENUE**

Attachment 1 shows the location of the racing areas.

#### **8 THE COURSES**

The courses to be sailed will be described in the sailing instructions.

#### **9 PENALTY SYSTEM**

- 9.1 Appendix P will apply with the following change:  
On the first protest, if protested after she has finished, she will be given a scoring penalty of 6 points, without a hearing. If her score results in a score worse than DSQ, the penalty will be corresponding to DSQ.
- 9.2 Action taken under Appendix P will not be grounds for redress by a competitor.
- 9.3 Rule P2.3 will not apply and rule P2.2 is changed so that it will apply to any protest after the first one.

## **10 SCORING**

A maximum of 7 races are scheduled. A minimum of 3 races is required to constitute a series.

- (a) When less than 4 races have been completed, a boat's series score will be the total of her race scores.
- (b) When 4 or more races have been completed, a boat's series score will be the total of her scores excluding her worst score.

## **11 RADIO COMMUNICATION**

A boat shall neither make radio transmissions while racing nor receive radio communications not available to all boats. This restriction also applies to mobile telephones.

## **12 PRIZES**

Prizes will be awarded as follows:

Bic Techno	1 <sup>st</sup> to 3 <sup>rd</sup>
Mistral One Design	1 <sup>st</sup> to 3 <sup>rd</sup>
RSX	1 <sup>st</sup> to 3 <sup>rd</sup>
Formula	1 <sup>st</sup> to 3 <sup>rd</sup>

## **13 DISCLAIMER OF LIABILITY**

Competitors participate in the regatta entirely at their own risk, See rule 4, Decision to Race. The organising authority will not accept any liability for material damage or personal injury or death sustained in conjunction with or prior to, during, or after the regatta.

## **14 INSURANCE**

All competitors are required to have appropriate insurance coverage.



**Singapore National Windsurfing Championship  
26 – 27 Jul 2008, National Sailing Centre  
Entry Form**

Attn: Singapore Sailing Federation  
1500 East Coast Parkway  
National Sailing Centre  
Singapore 468963

Tel: +65 6444 4555  
Website: [www.sailing.org.sg](http://www.sailing.org.sg)

Helm's Name: \_\_\_\_\_  
(Enter full name)

NRIC: \_\_\_\_\_

Class of Boat: \_\_\_\_\_

Sail No: \_\_\_\_\_

School: \_\_\_\_\_

Club: \_\_\_\_\_

Home Addr: \_\_\_\_\_

Date of Birth: \_\_\_\_\_

\_\_\_\_\_

Sex: \_\_\_\_\_

\_\_\_\_\_

Tel No: \_\_\_\_\_

Email: \_\_\_\_\_

Mobile: \_\_\_\_\_

**Entry Fees**

The entry fees (inclusive of GST) will be non-refundable:

Class	By 19 Jul	After 19 Jul
Bic Techno	\$32.10	\$48.15
Mistral One Design	\$32.10	\$48.15
RSX	\$32.10	\$48.15
Formula	\$32.10	\$48.15

Enclosed is S\$\_\_\_\_\_ being payment for the entry fee.

**Declaration by competitor**

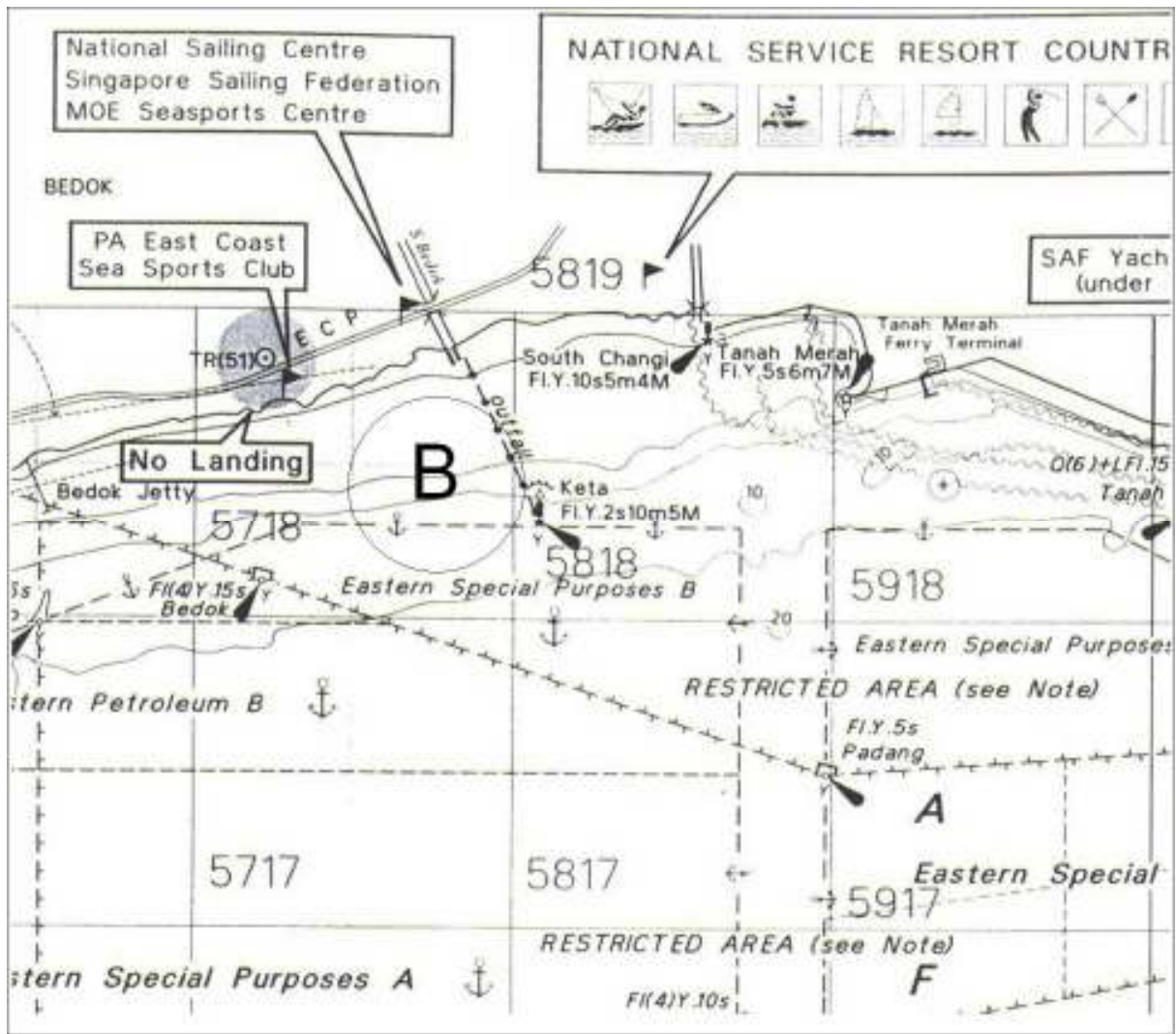
I agree to be bound by the racing rules of the 2005/2008 Racing Rules of Sailing (RRS); the Notice of Race (NOR); the Sailing Instructions (SI); any subsequent changes/addendum made by the Organising Authority.

I hereby also declare that I take part in the championship entirely at my own risk and I will not hold the Organising Authority and its officials and volunteer liable for any damage, loss or injury which may occur.

\_\_\_\_\_  
Helm's Signature

\_\_\_\_\_  
Parent's Signature  
(Required for sailors 21 years old & below)

**ATTACHMENT 1**  
**RACING AREAS**

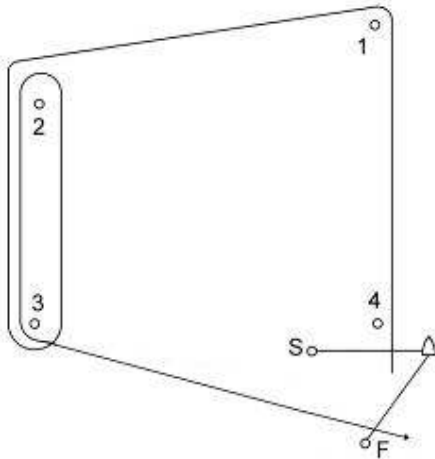


## ATTACHMENT 2

### ALL COURSE AREAS

All marks to be left to port

#### Trapezoid Course



*Trapezoid Courses (All marks to port)*

#### **Course Flag "I1" (Inner Loop – 1 lap)**

Start, Mark 1, Mark 4, Mark 1, Mark 2, Mark 3, Finish

#### **Course Flag "I2" (Inner Loop – 2 laps)**

Start, Mark 1, Mark 4, Mark 1, Mark 4, Mark 1, Mark 2, Mark 3, Finish

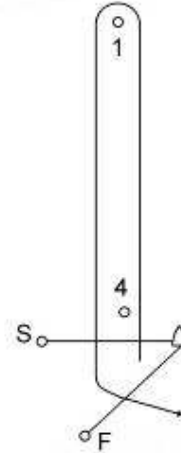
#### **Course Flag "O1" (Outer Loop – 1 lap)**

Start, Mark 1, Mark 2, Mark 3, Mark 2, Mark 3, Finish

#### **Course Flag "O2" (Outer Loop – 2 laps)**

Start, Mark 1, Mark 2, Mark 3, Mark 2, Mark 3, Mark 2, Mark 3, Finish

#### Windward / Leeward Course



*Windward / Leeward Courses (All marks to port)*

#### **Course Flag "W1"**

Start, Mark 1, Mark 4, Mark 1, Finish

#### **Course Flag "W2"**

Start, Mark 1, Mark 4, Mark 1, Mark 4, Mark 1, Finish