



NSC CUP SERIES 1

23 – 24 Feb 2008

National Sailing Centre, Singapore

Organising Authority: Singapore Sailing Federation

NOTICE OF RACE

1 RULES

The regatta will be governed by the *rules* as defined in The Racing Rules of Sailing.

2 ADVERTISING

Advertising will be restricted to Category C.

3 ELIGIBILITY AND ENTRY

3.1 The regatta is open to all sailors in the Laser, Laser Radial, Byte, and 420 classes, who are members of a club affiliated to SingaporeSailing or in the case of international entrants, are members of a club affiliated to their own national authority.

3.2 A minimum of 6 entries in each class is required to form an event.

3.3 Singaporean 420 competitors must have at least SingaporeSailing Level 2 Proficiency certification. All other Singaporean competitors in the other classes must have at least SingaporeSailing Level 1 Proficiency certification.

3.4 Eligible boats may enter by completing the attached form and sending it, together with the required fee, to

Singapore Sailing Federation
1500 East Coast Parkway
National Sailing Centre
Singapore 468963

Tel: +65 6444 4555
Fax: +65 6448 0485
Website: www.sailing.org.sg

by the closing date, **22 Feb 2008**. Entries may be accepted after the closing date at the discretion of the Organising Authority and shall be subjected to a late entry fee.

4 FEES

The entry fees (inclusive of GST) will be non-refundable.

<u>Class</u>	<u>By 22 Feb</u>	<u>After 22 Feb</u>
Laser/Byte	\$32.10	\$48.15
420	\$48.15	\$72.25

5 SCHEDULE

- 5.1 23 Feb 2008 Racing 1st warning signal at 1300 hrs
24 Feb 2008 Racing 1st warning signal at 1300 hrs

5.2 There will be no limit to the number of races per day.

5.3 On the last day of the regatta no warning signal will be made after 1530hrs.

6 SAILING INSTRUCTIONS

The sailing instructions will be available after the closing date at the National Sailing Centre.

7 VENUE

Attachment 1 shows the location of the racing areas.

8 THE COURSES

The courses to be sailed will be trapezoid or windward/leeward courses as described in the sailing instructions.

9 PENALTY SYSTEM

- 9.1 Appendix P will apply with the following change:
On the first protest, if protested after she has finished, she will be given a scoring penalty of 6 points, without a hearing. If her score results in a score worse than DSQ, the penalty will be corresponding to DSQ.
- 9.2 Action taken under Appendix P will not be grounds for redress by a competitor.
- 9.3 Rule P2.3 will not apply and rule P2.2 is changed so that it will apply to any protest after the first one.

10 SCORING

- 10.1 A maximum of 5 races are scheduled. A minimum of 3 races is required to constitute a series.
- 10.2 When 3 or fewer races have been completed, a boat's series score will be the total of her race scores.
- 10.3 When 4 or more races have been completed, a boat's series score will be the total

of her scores excluding her worst score.

- 10.4 The NSC Cup is comprised of 3 individual series of races which will be conducted on the following weekends:
(a) Series 1: 23 – 24 Feb 2008
(b) Series 2: 19 – 20 Apr 2008
(c) Series 3: 30 – 31 Aug 2008
- 10.5 Prizes will be awarded in accordance with NOR item 12 for each series. Prizes may also be awarded for each individual series at the conclusion of the respective individual series.
- 10.6 The winner of the NSC Cup for each class will be based on the accumulative number of races of the 3 series, less the number of discards as stated below:
- A maximum of 15 races are scheduled across the 3 series.
 - When 6 or fewer races have been completed, a boat's series score will be the total of her race scores.
 - When 7 or more races have been completed, a boat's series score will be the total of her scores excluding her worst score.
 - When 11 or more races have been completed, a boat's series score will be the total of her scores excluding her two worst scores.

11 RADIO COMMUNICATION

A boat shall neither make radio transmissions while racing nor receive radio communications not available to all boats. This restriction also applies to mobile telephones.

12 PRIZES

- | | | |
|------|--|--|
| 12.1 | Laser
Open Division | 1 st to 3 rd |
| 12.2 | Laser Radial
Open Division | 1 st to 3 rd |
| 12.3 | Byte
Open Division
Ladies Division | 1 st to 5 th
1 st to 3 rd |
| 12.4 | 420
Open Division | 1 st to 3 rd |

13 DISCLAIMER OF LIABILITY

Competitors participate in the regatta entirely at their own risk, See rule 4, Decision to Race. The organising authority will not accept any liability for material damage or personal injury or death sustained in conjunction with or prior to,

during, or after the regatta.

14 INSURANCE

All competitors are required to have appropriate insurance coverage.



NSC CUP SERIES 1
23 – 24 Feb 2008, National Sailing Centre
Entry Form

Attn: Singapore Sailing Federation
1500 East Coast Parkway
National Sailing Centre
Singapore 468963

Tel: +65 6444 4555
Fax: +65 6448 0485
Website: www.sailing.org.sg

Helm's Name: _____
(Enter full name)

NRIC: _____

Class of Boat: _____
(Indicate sail size if Laser class)

Sail No: _____

School: _____

Club: _____

Home Addr: _____

Date of Birth: _____

Sex: _____

Email: _____

Tel No: _____

Crew's Name: _____

Mobile: _____

Entry Fees

The entry fees (inclusive of GST) will be non-refundable:

<u>Class</u>	<u>By 22 Feb</u>	<u>After 22 Feb</u>
Laser/Byte	\$32.10	\$48.15
420	\$48.15	\$72.25

Enclosed is S\$_____ being payment for the entry fee.

Declaration by competitor

I agree to be bound by The Racing Rules of Sailing; the Notice of Race; the Sailing Instructions; and any subsequent changes/addendum made the Organising Authority.

I hereby declare that I take part in the championship entirely at my own risk and I will not hold the Organising Authority and its officials and volunteers liable for any damage, loss or injury which may occur.

Helm's
Signature

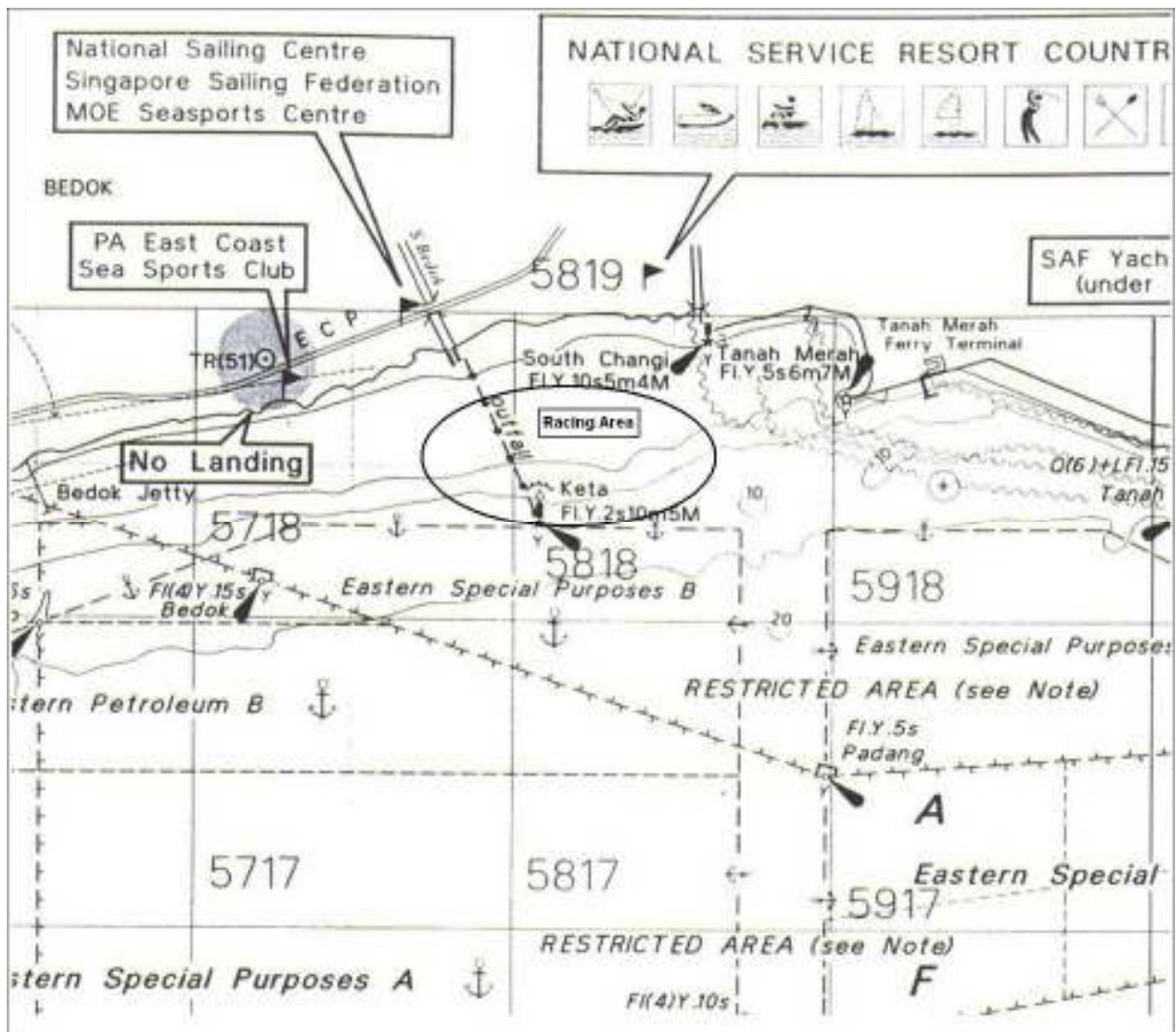
Parent's Signature
(Required for sailors
21 years old & below)

Crew's
Signature

Parent's Signature
(Required for sailors
21 years old & below)

ATTACHMENT 1

RACING AREAS

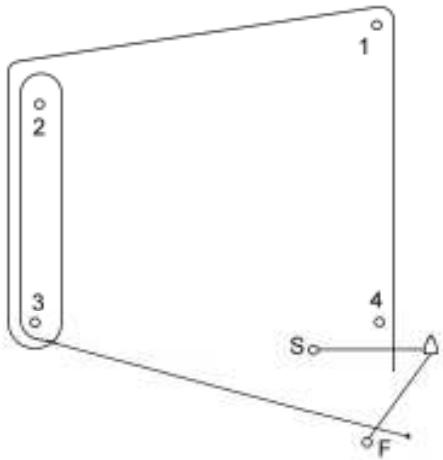


ATTACHMENT 2 - Courses

ALL COURSE AREAS

All marks to be left to port

Trapezoid Course



Trapezoid Courses (All marks to port)

Course Flag "I1" (Inner Loop – 1 lap)

Start, Mark 1, Mark 4, Mark 1, Mark 2, Mark 3, Finish

Course Flag "I2" (Inner Loop – 2 laps)

Start, Mark 1, Mark 4, Mark 1, Mark 4, Mark 1, Mark 2, Mark 3, Finish

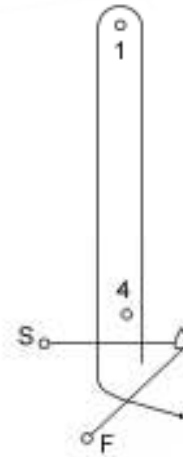
Course Flag "O1" (Outer Loop – 1 lap)

Start, Mark 1, Mark 2, Mark 3, Mark 2, Mark 3, Finish

Course Flag "O2" (Outer Loop – 2 laps)

Start, Mark 1, Mark 2, Mark 3, Mark 2, Mark 3, Mark 2, Mark 3, Finish

Windward / Leeward Course



Windward / Leeward Courses
(All marks to port)

Course Flag "W1"

Start, Mark 1, Mark 4, Mark 1, Finish

Course Flag "W2"

Start, Mark 1, Mark 4, Mark 1, Mark 4, Mark 1, Finish