



NOSS SAILING CHAMPIONSHIP

21 – 23 November 2009

National Sailing Centre, Singapore

Organising Authority: Singapore Sailing Federation

NOTICE OF RACE

1 RULES

- 1.1 The regatta will be governed by the *rules* as defined in The Racing Rules of Sailing.

2 ADVERTISING

Advertising will be restricted to Category C.

3 ELIGIBILITY AND ENTRY

- 3.1 The regatta is open to all boats of the Optimist and Byte classes who are members of a club affiliated to SingaporeSailing, or in the case of international entrants, are members of a club affiliated to their own national authority.

- 3.2 All competitors must possess SingaporeSailing Level 1 Proficiency certification, Opti Racer certification or an equivalent accepted by the Organising Authority.

- 3.3 Eligible boats may enter by completing the attached form and sending it, together with the required fee, to

Singapore Sailing Federation
1500 East Coast Parkway
National Sailing Centre
Singapore 468963
Tel: +65 6444 4555
Website: www.sailing.org.sg
by the closing date, **14 Nov 2009**.

- 3.4 Late entries may be accepted at the discretion of the Organising Authority and shall be subjected to a late entry fee.
- 3.5 A minimum of 6 entries is required to form a class.

4 FEES

The entry fees (inclusive of GST) are as follows:

<u>Class</u>	<u>By 14 Nov</u>	<u>After 14 Nov</u>
Optimist	\$32.10	\$48.15
Byte	\$32.10	\$48.15

The fees are non-refundable.

5 QUALIFYING AND FINAL SERIES

- 5.1 When more than 80 entries are received at the close of entries, the regatta shall consist of a qualifying series and a final series.
- 5.2 The entire fleet will be divided into 4 groups. The seeding of boats into the 4 groups will be based on the current National Ranking where available or another method as determined by the Organising Authority. The seeding will be done as soon as possible after the closing of entries and shall not be subject to protest. This changes rule 60.1(b).
- 5.3 Each qualifying race shall consist of 2 groups racing together and where possible each group shall race each other group an equal number of times.
- 5.4 Groups may be started in any order however the Race Committee will attempt to start as follows:

Race No.	Groups	Colours	Race No.	Groups	Colours
Race 1A	1 & 2	White & Brown	Race 1B	3 & 4	Yellow & Pink
Race 2A	2 & 4	Brown & Pink	Race 2B	1 & 3	White & Yellow
Race 3A	1 & 4	White & Pink	Race 3B	2 & 3	Brown & Yellow

- 5.5 The Group Flags shall be displayed in place of Class Flags. All boats will display a coloured ribbon (corresponding with the colour of their groups) attached securely to the top of their mast or sprit. The organiser will provide these ribbons.
- 5.6 The group flags and colours are:
Group 1 – White
Group 2 – Brown
Group 3 – Yellow
Group 4 – Pink
- 5.7 When more than 4 groups are required, appropriate measures will be taken.
- 5.8 Boats will be assigned to final-series fleets Gold, Silver, Bronze, etc., on the basis of their ranks in the qualifying-series. The final-series fleets will have, as

nearly as possible, equal size but so that the Silver fleet is not larger than the Gold fleet, etc. Boats with the best qualifying-series ranks will race all final-series races in the Gold fleet, boats with the next-best qualifying-series ranks will race in the Silver fleet, etc.

- 5.9 Final Series flags and colours shall be:
Gold Fleet – Gold
Silver Fleet – Light green
Bronze Fleet – Red (If applicable)

6 SCHEDULE

- | 6.1 | <i>Dates</i> | <i>Optimist/Byte</i> | <i>Time of 1st Warning Signal</i> |
|-----|-----------------|----------------------|--|
| | 21 -23 Nov 2009 | Racing | 1100 hrs |

- 6.2 There will be no limit to the number of races per day.
- 6.3 On the last day of the regatta no warning signal will be made after 1530hrs.

7 SAILING INSTRUCTIONS

The sailing instructions will be available after the closing date at the National Sailing Centre.

8 VENUE

Attachment 1 shows the location of the racing areas.

9 THE COURSES

The diagrams in Attachment 2 show the courses, the order in which marks are to be passed, and the side on which each mark is to be left.

10 PENALTY SYSTEM

- 10.1 Appendix P will apply, with the following change:
Rule P2.1 is changed such that on the first protest, if a boat is protested after she has finished, she will be given a scoring penalty of 8 points, without a hearing. If her score results in a score worse than DSQ, the penalty will be corresponding to DSQ.
- 10.2 Rule P2.3 will not apply and rule P2.2 is changed so that it will apply to any protest after the first one.
- 10.3 Action taken under Appendix P will not be grounds for redress by a competitor.

11 SCORING

- 11.1 The regatta shall consist of a qualifying series and a final series. All race scores in the qualifying and final series shall be used in determining the final series score, less any discards allowed.
- 11.2 A maximum of 9 races are scheduled. A minimum of 5 races are required to be completed to constitute a regatta.
- (a) At least 5 qualifying races are required to be completed for each group to constitute the qualifying series and to enter the final series.
 - (b) The final series shall consist of all remaining races not sailed in the qualifying series. All the race scores in the qualifying and final series shall be used in determining the final series score, less any discards allowed.
 - (c) When 5 or fewer qualifying series races have been completed and no final series has been conducted, a boat's series score will be the total of all her race scores.
 - (d) When 6 or more qualifying and final series races (combined) have been completed for a particular group, a boat's series score in that group shall be the total of her race scores excluding her worst score.
- 11.3 There will be only one final official ranking list for the regatta and for each class. Boats in the gold fleet will rank higher than those in the silver fleet, who shall in turn be ranked higher than those in bronze fleet, etc.
- 11.4 The number of final series races need not be equal for all final series groups.
- 11.5 If the minimum number of races required for the qualifying series is not completed on the first scheduled race day, the race shall continue on the next scheduled race day, using the qualifying series grouping system.

12 RADIO COMMUNICATION

A boat shall neither make radio transmissions while racing nor receive radio communications not available to all boats. This restriction also applies to mobile telephones.

13 PRIZES

Prizes will be awarded as follows:

Optimist

<u>Gold Fleet</u>	1 st to 5 th
Boys Challenge Trophy	1 st
Girls Challenge Trophy	1 st
<u>Silver Fleet</u>	1 st to 5 th
<u>Bronze Fleet</u> (If applicable)	1 st to 5 th
NOSS 'B' Division	1 st to 5 th
(NOSS 'B' Fleet Division: NOSS Centre sailors who are not in the SOF)	

National A or B Training Squads.)

Byte

<u>Gold Fleet</u>	1 st to 5 th
Boys Challenge Trophy	1 st
Girls Challenge Trophy	1 st
<u>Silver Fleet</u>	1 st to 5 th
<u>Bronze Fleet</u> (If applicable)	1 st to 5 th

14 DISCLAIMER OF LIABILITY

Competitors participate in the regatta entirely at their own risk, See rule 4, Decision to Race. The organising authority will not accept any liability for material damage or personal injury or death sustained in conjunction with or prior to, during, or after the regatta.

15 INSURANCE

All competitors and boats are required to have appropriate insurance coverage.



**NOSS Sailing Championship
21 – 23 Nov 2009 National Sailing Centre
Entry Form**

Attn: Singapore Sailing Federation
1500 East Coast Parkway
National Sailing Centre
Singapore 468963

Tel: +65 6444 4555
Website: www.sailing.org.sg

Helm's Name: _____
(Enter full name)

NRIC: _____

Class of Boat: _____

Sail No: _____

School: _____

Club: _____

Home Addr: _____

Date of Birth: _____

Sex: _____

Email: _____

Mobile: _____

Entry Fees

The entry fees (inclusive of GST) will be non-refundable:

	<u>By 14 Nov</u>	<u>After 14 Nov</u>
Optimist	\$32.10	\$48.15
Byte	\$32.10	\$48.15

Enclosed is S\$_____ being payment for the entry fee.

Declaration by competitor

I agree to be bound by the racing rules of the 2009/2012 Racing Rules of Sailing (RRS); the Notice of Race (NOR); the Sailing Instructions (SI); any subsequent changes/addendum made by the Organising Authority.

I hereby also declare that I take part in the championship entirely at my own risk and I will not hold the Organising Authority and its officials and volunteer liable for any damage, loss or injury which may occur.

Helm's Signature

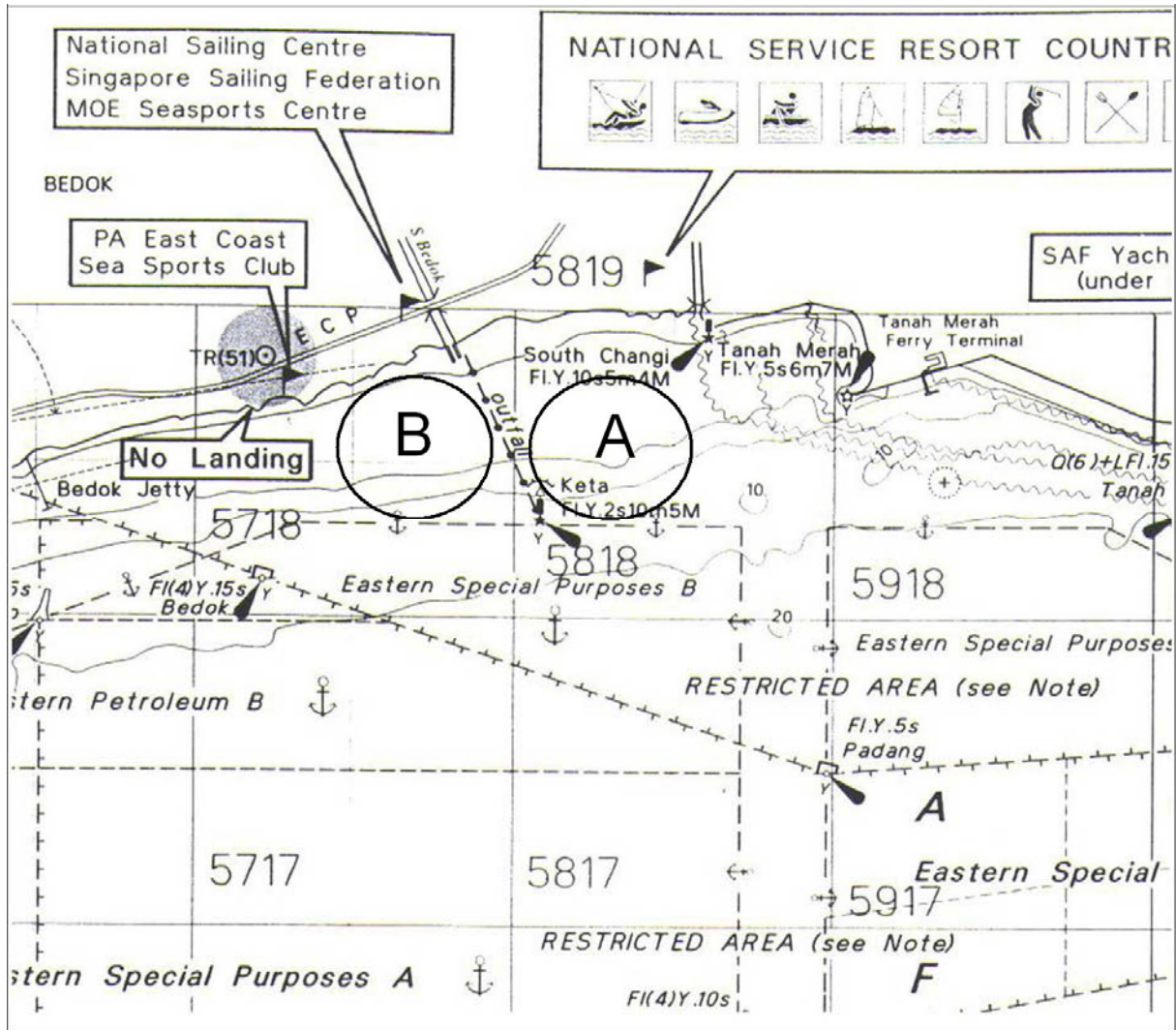
Parent's Signature
(Required for sailors 21 years old & below)

ATTACHMENT 1

RACING AREAS

COURSE AREA ALPHA – Byte

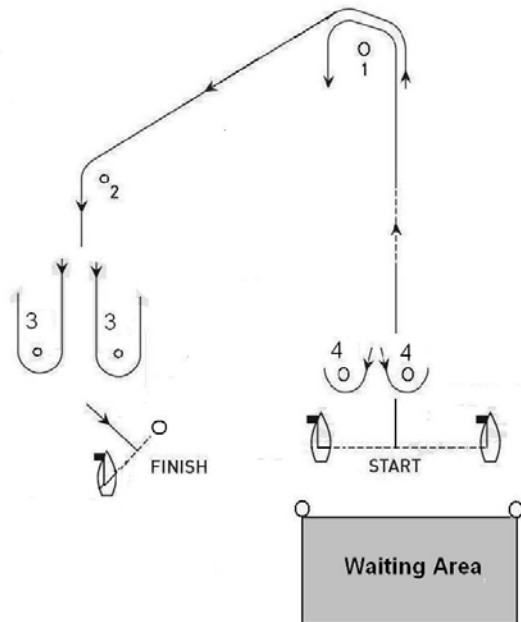
COURSE AREA BRAVO – Optimist



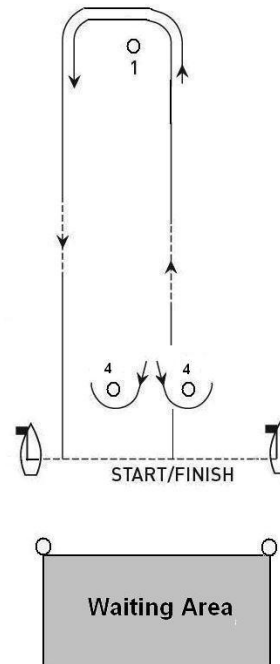
ATTACHMENT 2

COURSES – All Course Areas

Trapezoid Course



Windward / Leeward Course



Trapezoid Courses

Course Flag “O1” (Outer Loop – 1 lap)

S – 1 – 2 – 3 – 2 – 3 – F

Course Flag “O2” (Outer Loop – 2 laps)

S – 1 – 2 – 3 – 2 – 3 – 2 – 3 – F

Course Flag “I1” (Inner Loop – 1 lap)

S – 1 – 4 – 1 – 2 – 3 – F

Course Flag “I2” (Inner Loop – 2 laps)

S – 1 – 4 – 1 – 4 – 1 – 2 – 3 – F

Windward / Leeward Courses

Course Flag “W 1”

S – 1 – 4 – 1 – F

Course Flag “W 2”

S – 1 – 4 – 1 – 4 – 1 – F