



## **NSC CUP SERIES 1**

21 – 22 Feb 2009

National Sailing Centre, Singapore

Organising Authority: Singapore Sailing Federation

### **SAILING INSTRUCTIONS**

#### **1 RULES**

- 1.1 The regatta will be governed by the rules as defined in *The Racing Rules of Sailing*.
- 1.2 No national prescriptions will apply.
- 1.3 If there is a conflict between languages the English text will take precedence.

#### **2 NOTICES TO COMPETITORS**

Notices to competitors will be posted on the official notice board located at the National Sailing Centre.

#### **3 CHANGES TO SAILING INSTRUCTIONS**

Any change to the sailing instructions will be posted before 0930 on the day it will take effect, except that any change to the schedule of races will be posted by 1800 on the day before it will take effect.

#### **4 SIGNALS MADE ASHORE**

- 4.1 Signals made ashore will be displayed on the flag staff located within the National Sailing Centre grounds.
- 4.2 When flag AP is displayed ashore, '1 minute' is replaced with 'not less than 30 minutes' in the race signal AP.

#### **5 FORMAT OF RACING**

The regatta will consist of 3 individual series of races, which will be conducted on the following weekends:

Series 1: 21 – 22 Feb 2009

Series 2: 25 – 26 Jul 2009

Series 3: 29 – 30 Aug 2009

#### **6 SCHEDULE OF RACES**

- 6.1 Dates of racing:

21 Feb 2009	Racing
22 Feb 2009	Racing
- 6.2 There will be no limit to the number of races that may be sailed each day.

- 6.3 The scheduled time of the warning signal for the first race each day is 1300hrs.
- 6.4 On the last day of the regatta no warning signal will be made after 1530hrs.

## **7 CLASS FLAGS**

Class flags will be:

<u>Class</u>	<u>Flag</u>
Laser Std & Laser Radial	Black letter 'LSR' on yellow backing
Byte	Black letter 'BYTE' on dark purple backing
420	White letter '420' on dark brown backing

## **8 RACING AREAS**

Attachment 1 shows the location of the racing area.

## **9 THE COURSES**

The diagrams in Attachment 2 show the courses, the order in which marks are to be passed, and the side on which each mark is to be left.

## **10 MARKS**

- 10.1 Marks 1 and 4 will be orange conical marks.  
Marks 2 and 3 will be yellow conical marks.
- 10.2 New marks, as provided in instruction 12.1, will be pink spherical marks.
- 10.3 The starting mark will be a yellow spherical mark.  
The finishing mark will be a blue spherical mark.

## **11 THE START**

- 11.1 Races will be started by using rule 26 with the warning signal made 5 minutes before the starting signal.
- 11.2 The starting line will be between a staff displaying an orange flag on the committee boat and the starting mark.
- 11.3 Classes may be started in any order.
- 11.4 Boats whose warning signal has not been made shall avoid the starting area during the starting sequence for other races.
- 11.5 A boat starting later than 4 minutes after her starting signal will be scored Did Not Start without a hearing. This changes rule A4.

## **12 CHANGE OF THE NEXT LEG OF THE COURSE**

- 12.1 To change the next leg of the course, the race committee will either move the original mark to a new position or lay a new mark and remove the original mark as soon as practicable. When in a subsequent change a new mark is replaced, it will be replaced by an original mark.

## **13 THE FINISH**

The finishing line will be between a staff displaying a blue flag on the committee boat and the finishing mark.

## **14 PENALTY SYSTEM**

- 14.1 Appendix P will apply as changed by instruction(s) 14.2 and 14.3.
- 14.2 Rule P2.1 is changed such that on the first protest, if a boat is protested after she has finished, she will be given a scoring penalty of 6 points, without a hearing. If her score results in a score worse than DSQ, the penalty will be corresponding to DSQ.
- 14.3 Rule P2.3 will not apply and rule P2.2 is changed so that it will apply to any protest after the first one.
- 14.4 Action taken under Appendix P will not be grounds for redress by a competitor.

## **15 TIME LIMITS**

- 15.1 The time limits are as follows:

<u>Class</u>	<u>Time limit</u>
Laser/Laser Radial/Byte	80 minutes
420	90 minutes

- 15.2 Boats failing to finish within 20 minutes after the first boat sails the course and finishes, or within the time limit, whichever is the later, will be scored Did Not Finish. This changes rules 35, A4 and A5.

## **16 PROTESTS AND REQUESTS FOR REDRESS**

- 16.1 Protest forms are available at the race office, located at the National Sailing Centre. Protests and requests for redress or reopening shall be delivered there within the protest time limit, accompanied by S\$30, which is refundable if the protest is not found frivolous.
- 16.2 For each class, the protest time limit is 60 minutes after the last boat has finished the last race of the day.
- 16.3 Notices will be posted no later than 30 minutes after the protest time limit to inform competitors of hearings in which they are parties or named as witnesses. Hearings will be held in the protest room, located on the second storey of the NSC building.
- 16.4 Notices of protests by the race committee or protest committee will be posted to inform boats under rule 61.1(b).
- 16.5 A list of boats that, under instruction 14.1, have been penalised for breaking rule 42 will be posted.
- 16.6 Breaches of instructions 11.4, 18, 22, 23 and 24 will not be grounds for a protest by a boat. This changes rule 60.1(a). Penalties for these breaches may be less than disqualification if the protest committee so decides. The scoring abbreviation for a discretionary penalty imposed under this instruction will be DPI.
- 16.7 On the last scheduled day of racing, a request for reopening a hearing shall be delivered
- (a) within the protest time limit if the requesting party was informed of the decision on the previous day;
  - (b) no later than 30 minutes after the requesting party was informed of the decision on that day.

This changes rule 66.

- 16.8 On the last scheduled day of racing, a request for redress based on a protest committee decision shall be delivered no later than 30 minutes after the decision was posted. This changes rule 62.2.

## **17 SCORING**

- 17.1 A maximum of 5 races are scheduled for each individual NSC Cup series.
- 17.2 3 races are required to be completed to constitute an individual series.
- 17.3 (a) When fewer than 4 races have been completed, a boat's series score will be the total of her race scores.
- (b) When 4 or more races have been completed, a boat's series score will be the total of her race scores excluding her worst score.
- 17.4 A maximum of 15 races are scheduled for the NSC Cup for each class.
- 17.5 (a) When fewer than 7 races have been completed, a boat's series score will be the total of her race scores.
- (b) When from 7 to 10 races have been completed, a boat's series score will be the total of her race scores excluding her worst score.
- (c) When 11 or more races have been completed, a boat's series score will be the total of her race scores excluding her two worst scores.
- 17.6 Scoring for the NSC Cup will be in accordance with rule A9 of Appendix A.

## **18 SAFETY REGULATIONS**

- 18.1 Buoyancy: All competitors shall wear personal flotation devices at all times whilst afloat.
- 18.2 A boat failing to comply with instruction 18.1 may be protested by the race committee or jury. The penalty is a DSQ in all the races of the day.
- 18.3 **Check-out and check-in:** each boat shall personally sign-on on the forms provided at the Race Office prior to launching for the first race of the day. After arriving on shore, each boat shall personally sign-off on the forms provided within the protest time limit. Duplicate sign-on and sign-off forms may be provided at other neighbouring clubs.
- 18.4 A boat failing to comply with instruction 18.3 may be protested by the race committee. The penalty is a DSQ in the first race of the day.
- 18.5 A boat that retires from a race shall notify the race committee as soon as possible.

## **19 REPLACEMENT OF CREW OR EQUIPMENT**

- 19.1 Substitution of competitors will not be allowed without prior written approval of the race committee.
- 19.2 Substitution of damaged or lost equipment will not be allowed unless authorised by the race committee. Requests for substitution shall be made to the committee at the first reasonable opportunity.

## **20 EQUIPMENT AND MEASUREMENT CHECKS**

A boat or equipment may be inspected at any time for compliance with the class rules and sailing instructions. On the water, a boat can be instructed by

a race committee measurer to proceed immediately to a designated area for inspection.

**21 Foul Language**

Foul language is prohibited during this regatta. Any competitor emitting foul language loud enough to be heard by another person, regardless at whom the foul language was directed, shall be subject to a hearing under RRS 69. Any boat may file a report against another boat from which it heard foul language. On the first offense, the penalty is a DSQ when the incident is deemed to be in breach of good sportsmanship. Upon a second offense, the penalty is a DNE. Upon the third offense, the penalty is a disqualification from the regatta.

**22 SUPPORT BOATS**

Team leaders, coaches and other support personnel shall stay outside areas where boats are racing from the time of the preparatory signal for the first class to start until all boats have finished or the race committee signals a postponement, general recall or abandonment.

**23 TRASH DISPOSAL**

Boats shall not put trash in the water. Trash may be placed aboard support and race committee boats.

**24 RADIO COMMUNICATION**

Except in an emergency, a boat shall neither make radio transmissions while racing nor receive radio communications not available to all boats. This restriction also applies to mobile telephones.

**25 PRIZES**

25.1 Prizes will be awarded in accordance with SI item 25.2 for each series. Prizes may also be awarded for each individual series at the conclusion of the respective individual series.

25.2 Prizes will be given as follows:

**Laser**

Open Division 1<sup>st</sup> to 3<sup>rd</sup>

**Laser Radial**

Open Division 1<sup>st</sup> to 3<sup>rd</sup>

**Byte**

Open Division 1<sup>st</sup> to 5<sup>th</sup>

Ladies Division 1<sup>st</sup> to 3<sup>rd</sup>

**420**

Open Division 1<sup>st</sup> to 3<sup>rd</sup>

**26 DISCLAIMER OF LIABILITY**

Competitors participate in the regatta entirely at their own risk. See rule 4, Decision to Race. The organising authority will not accept any liability for

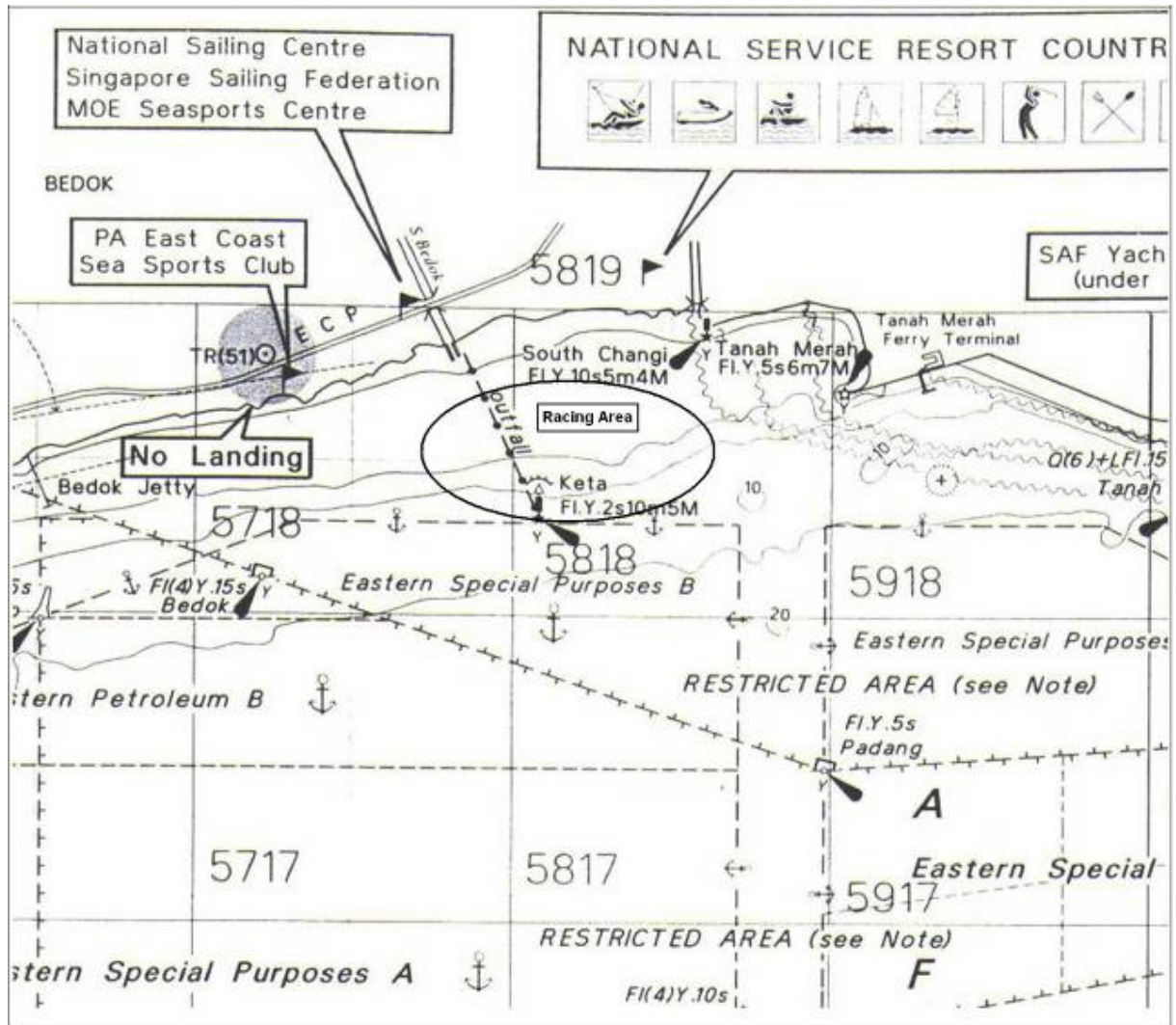
material damage or personal injury or death sustained in conjunction with or prior to, during, or after the regatta.

**27 INSURANCE**

All competitors are required to have appropriate insurance coverage.

**ATTACHMENT 1**

# RACING AREA

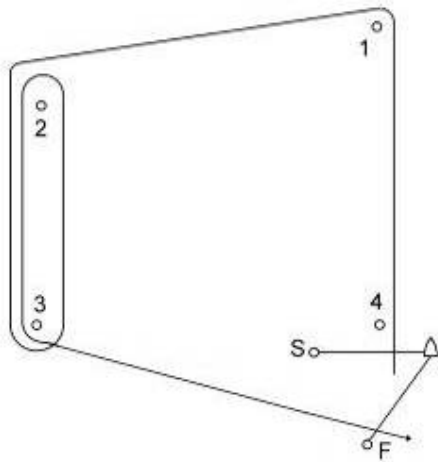


## ATTACHMENT 2 - Courses

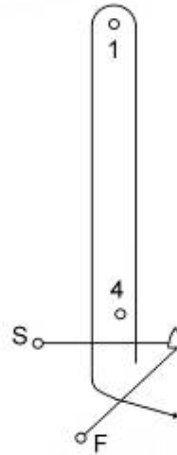
### ALL COURSE AREAS

All marks to be left to port

#### Trapezoid Course



#### Windward / Leeward Course



*Trapezoid Courses (All marks to port)*

#### **Course Flag "I1" (Inner Loop – 1 lap)**

Start, Mark 1, Mark 4, Mark 1, Mark 2, Mark 3, Finish

#### **Course Flag "I2" (Inner Loop – 2 laps)**

Start, Mark 1, Mark 4, Mark 1, Mark 4, Mark 1, Mark 2, Mark 3, Finish

#### **Course Flag "O1" (Outer Loop – 1 lap)**

Start, Mark 1, Mark 2, Mark 3, Mark 2, Mark 3, Finish

#### **Course Flag "O2" (Outer Loop – 2 laps)**

Start, Mark 1, Mark 2, Mark 3, Mark 2, Mark 3, Mark 2, Mark 3, Finish

*Windward / Leeward Courses (All marks to port)*

#### **Course Flag "W1"**

Start, Mark 1, Mark 4, Mark 1, Finish

#### **Course Flag "W2"**

Start, Mark 1, Mark 4, Mark 1, Mark 4, Mark 1, Finish