



## **NSC CUP FINAL SERIES**

29 – 30 Aug 2009

National Sailing Centre, Singapore  
Organising Authority: Singapore Sailing Federation

### **NOTICE OF RACE**

#### **1 RULES**

- 1.1 The regatta will be governed by the *rules* as defined in *The Racing Rules of Sailing*.

#### **2 ADVERTISING**

Advertising will be restricted to Category C.

#### **3 ELIGIBILITY AND ENTRY**

- 3.1 The regatta is open to all sailors of the Laser, Laser Radial, Byte, 420 Spinnaker, 420 Non-Spinnaker and 470 classes that are members of a club affiliated to SingaporeSailing, or in the case of international entrants, are members of a club affiliated to their own national authority.
- 3.2 Singaporean 420 Spinnaker and 470 competitors must have at least SingaporeSailing Level 2 Proficiency certification. All other Singaporean competitors in the other classes must have at least SingaporeSailing Level 1 Proficiency certification.
- 3.3 Eligible boats may enter by completing the attached form and sending it, together with the required fee, to
- |                              |          |  |
|------------------------------|----------|--|
| Singapore Sailing Federation | Tel:     | +65 6444 4555  |
| 1500 East Coast Parkway      | Website: | <a href="http://www.sailing.org.sg">www.sailing.org.sg</a> |
| National Sailing Centre      |          |  |
| Singapore 468963             |          |  |
- by the closing date, **27 Aug 2009**.
- 3.4 Late entries may be accepted at the discretion of the Organising Authority and shall be subjected to a late entry fee.
- 3.5 A minimum of 6 entries in each class is required to form an event.

## 4 FEES

Required fees are as follows:

<u>Class</u>	<u>Entry Fee</u>	<u>Late Entry Fee</u>
Laser / Byte	\$32.10	\$48.15
420 / 470	\$48.15	\$72.25

## 5 NSC CUP SERIES

The NSC Cup is comprised of 3 individual series of races which will be conducted on the following weekends:

- (a) Series 1: 21 – 22 Feb 2009
- (b) Series 2: 25 – 26 Jul 2009
- (c) Series 3: 29 – 30 Aug 2009

## 6 SCHEDULE

### 6.1 Dates of Racing:

<i>Date</i>	
29 Aug 2009	Racing
30 Aug 2009	Racing

- 6.2 There will be no limit to the number of races per day.
- 6.3 The scheduled time of the warning signal for the first race each day is 1300hrs.
- 6.4 On the last day of the regatta no warning signal will be made after 1530hrs.

## 7 SAILING INSTRUCTIONS

The sailing instructions will be available after the closing date at the National Sailing Centre.

## 8 VENUE

- 8.1 Course Alpha: Laser, Laser Radial, 420 Spinnaker, 420 Non-Spinnaker, 470  
Course Bravo: Byte
- 8.2 Attachment 1 shows the location of the racing areas.

## 9 THE COURSES

The diagrams in Attachment 2 show the courses, including the order in which marks are to be passed, and the side on which each mark is to be left.

## 10 PENALTY SYSTEM

- 10.1 Appendix P will apply as changed by instructions 10.2 and 10.3.
- 10.2 On the first protest, if a boat is protested after she has finished, she will be given a scoring penalty of 6 points, without a hearing. If her score results in a score worse than DSQ, the penalty will be corresponding to DSQ.

10.3 Rule P2.3 will not apply and rule P2.2 is changed so that it will apply to any protest after the first one.

10.4 Action taken under Appendix P will not be grounds for redress by a competitor.

## 11 SCORING

11.1 A maximum of 5 races are scheduled for each individual NSC Cup series.

11.2 3 races are required to be completed to constitute an individual series.

(a) When fewer than 4 races have been completed, a boat's series score will be the total of her race scores.

(b) When 4 or more races have been completed, a boat's series score will be the total of her race scores excluding her worst excludable score.

11.3 A maximum of 15 races are scheduled for the NSC Cup for each class.

(a) When fewer than 7 races have been completed, a boat's series score will be the total of her race scores.

(b) When from 7 to 10 races have been completed, a boat's series score will be the total of her race scores excluding her worst excludable score.

(c) When 11 or more races have been completed, a boat's series score will be the total of her race scores excluding her two worst excludable scores.

## 12 RADIO COMMUNICATION

Except in an emergency, a boat shall neither make radio transmissions while racing nor receive radio communications not available to all boats. This restriction also applies to mobile telephones.

## 13 PRIZES

Prizes will be awarded as stated below for the NSC Cup Series. Prizes may also be awarded for each individual series at the conclusion of the respective individual series.

### **Laser**

Open Division 1<sup>st</sup> to 3<sup>rd</sup>

### **Laser Radial**

Open Division 1<sup>st</sup> to 3<sup>rd</sup>

### **Byte**

Open Division 1<sup>st</sup> to 5<sup>th</sup>

Ladies Division 1<sup>st</sup> to 3<sup>rd</sup>

### **420 Spinnaker**

1<sup>st</sup> to 3<sup>rd</sup>

### **420 Non-Spinnaker**

1<sup>st</sup> to 3<sup>rd</sup>

### **470**

1<sup>st</sup> to 3<sup>rd</sup>

### **NSC Cup Overall Prizes**

Laser Std Series Champion	NSC Cup Laser Std Challenge Plaque
Laser Radial Series Champion	NSC Cup Laser Radial Challenge Plaque
Byte Series Champion	NSC Cup Byte Challenge Plaque
420 Series Champion	NSC Cup 420 Challenge Plaque

#### **14 DISCLAIMER OF LIABILITY**

Competitors participate in the regatta entirely at their own risk, See rule 4, Decision to Race. The organising authority will not accept any liability for material damage or personal injury or death sustained in conjunction with or prior to, during, or after the regatta.

#### **15 INSURANCE**

All competitors are required to have appropriate insurance coverage.



**NSC CUP FINAL SERIES**  
**29 – 30 Aug 2009, National Sailing Centre**  
**Entry Form**

Attn: Singapore Sailing Federation  
1500 East Coast Parkway  
National Sailing Centre  
Singapore 468963

Tel: +65 6444 4555  
Website: www.sailing.org.sg

Helm's Name: \_\_\_\_\_  
(Enter full name)

NRIC: \_\_\_\_\_

Class of Boat: \_\_\_\_\_  
(Pls indicate clearly)

Sail No: \_\_\_\_\_

School: \_\_\_\_\_

Club: \_\_\_\_\_

Home Addr: \_\_\_\_\_

Date of Birth: \_\_\_\_\_

\_\_\_\_\_

Sex: \_\_\_\_\_

Email: \_\_\_\_\_

Tel No: \_\_\_\_\_

Crew's Name: \_\_\_\_\_

Mobile: \_\_\_\_\_

**Entry Fees**

The entry fees (inclusive of GST) will be non-refundable:

<u>Class</u>	<u>By 27 Aug</u>	<u>After 27 Aug</u>
Laser / Byte	\$32.10	\$48.15
420 / 470	\$48.15	\$72.25

Enclosed is S\$\_\_\_\_\_ being payment for the entry fee.

**Declaration by competitor**

I/We agree to be bound by the Racing Rules of Sailing.

I/We acknowledge and accept the risks associated with participation in the regatta and waive all rights against and release the Organising Authority in respect of any loss of life and injury to persons, or loss of or damage to property, suffered in connection therewith; and acknowledge that participation in the regatta is entirely at my/our own risk and responsibility.

\_\_\_\_\_  
Helm's  
Signature

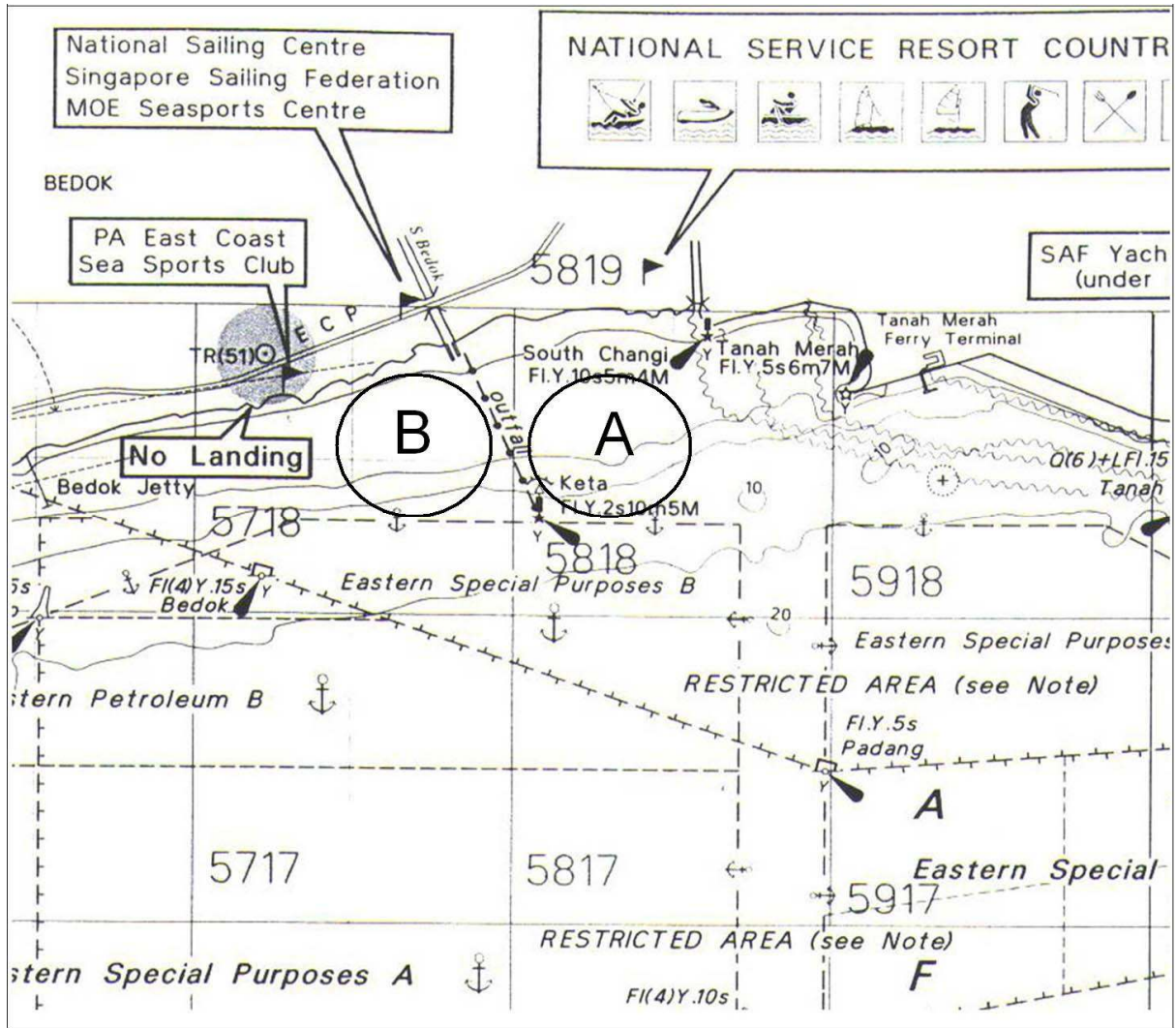
\_\_\_\_\_  
Parent's Signature  
(Required for sailors below  
21 years old)

\_\_\_\_\_  
Crew's  
Signature

\_\_\_\_\_  
Parent's Signature  
(Required for sailors  
below 21 years old)

**ATTACHMENT 1**

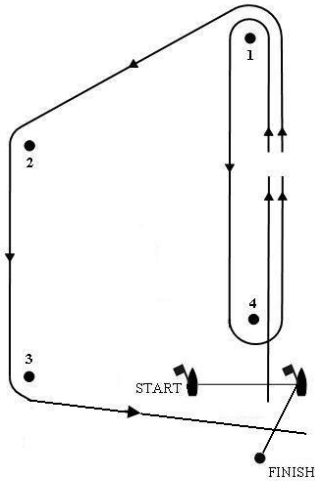
**RACING AREAS**



**ATTACHMENT 2 - Courses**

**COURSE AREA**

**Trapezoid Courses (All marks to port)**



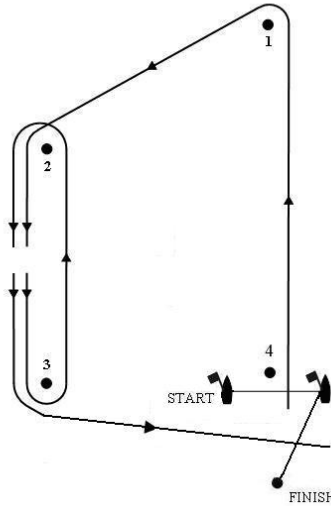
Trapezoid Inner

**Course Flag "I1" (Inner Loop – 1 lap)**

Start – 1 – 4 – 1 – 2 – 3 – Finish

**Course Flag "I2" (Inner Loop – 2 laps)**

Start – 1 – 4 – 1 – 4 – 1 – 2 – 3 – Finish



Trapezoid Outer

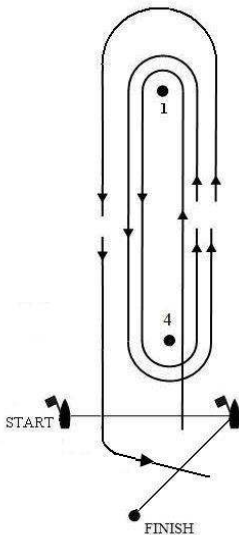
**Course Flag "O1" (Outer Loop – 1 lap)**

Start – 1 – 2 – 3 – 2 – 3 – Finish

**Course Flag "O2" (Outer Loop – 2 laps)**

Start – 1 – 2 – 3 – 2 – 3 – 2 – 3 – Finish

**Windward / Leeward Courses (All marks to port)**



**Course Flag "W1"**

Start – 1 – 4 – 1 – Finish

**Course Flag "W 2"**

Start – 1 – 4 – 1 – 4 – 1 – Finish