



**NSC CUP FINAL SERIES**  
29 – 30 Aug 2009  
National Sailing Centre, Singapore  
Organising Authority: Singapore Sailing Federation

**SAILING INSTRUCTIONS**

**1 RULES**

- 1.1 The regatta will be governed by the *rules* as defined in The Racing Rules of Sailing.

**2 ADDITIONAL INFORMATION**

If the number of entries requires fleet grouping, while racing each boat shall display a coloured ribbon corresponding to the fleet to which she has been assigned and attached to her mast top or sprit. Ribbons and instructions for attachment will be available from the race office.

**3 NOTICES TO COMPETITORS**

Notices to competitors will be posted on the official notice board located at National Sailing Centre.

**4 CHANGES TO SAILING INSTRUCTIONS**

Any change to the sailing instructions will be posted 1 hour before Flag D is displayed on the day it will take effect, except that any change to the schedule of races will be posted by 1800 on the day before it will take effect.

**5 SIGNALS MADE ASHORE**

- 5.1 Signals made ashore will be displayed on the flag staff located within the National Sailing Centre grounds.
- 5.2 When flag AP is displayed ashore, '1 minute' is replaced with 'not less than 30 minutes' in race signal AP.
- 5.3 A boat shall not launch until Flag D is displayed.

**6 FORMAT OF RACING**

- 6.1 If the number of entries received for any class at the close of entries is less than 80, the regatta will consist of a single series for that class.

- 6.2 Where more than 80 entries are received for any class at the close of entries, the class may race in groups as follows:
- 6.3 The entire fleet will be divided into 4 groups: White, Yellow, Pink, and Brown. When more than 4 groups are required, appropriate measures will be taken. The seeding of boats into the 4 groups will be based on the current National Ranking where available or another method as determined by the Organising Authority. The seeding will be done as soon as possible after the closing of entries and shall not be subject to protest. This changes rule 60.1(b).
- 6.4 (a) Each race shall consist of 2 groups racing together and where possible each group shall race each other group an equal number of times.
- (b) Groups may be started in any order however the Race Committee will attempt to start as follows:

Race No.	Groups	Colours	Race No.	Groups	Colours
Race 1A	1 & 2	White & Brown	Race 1B	3 & 4	Yellow & Pink
Race 2A	2 & 4	Brown & Pink	Race 2B	1 & 3	White & Yellow
Race 3A	1 & 4	White & Pink	Race 3B	2 & 3	Brown & Yellow
Race 4A	3 & 4	Yellow & Pink	Race 4B	1 & 2	White & Brown
Race 5A	1 & 3	White & Yellow	Race 5B	2 & 4	Brown & Pink

- 6.5 The Group Flags shall be displayed in place of Class Flags. All boats will display a coloured ribbon (corresponding with the colour of their groups) attached securely to the top of their mast or sprit. The organiser will provide these ribbons.
- 6.6 The group flags and colours are:
- Group 1 – White  
 Group 2 – Brown  
 Group 3 – Yellow  
 Group 4 – Pink
- 6.7 The regatta will consist of 3 individual series of races, which will be conducted on the following weekends:  
 Series 1: 21 – 22 Feb 2009  
 Series 2: 25 – 26 Jul 2009  
 Series 3: 29 – 30 Aug 2009

## 7 SCHEDULE OF RACES

- 7.1 Dates of racing:  
 29 – 30 Aug 2009                      Racing
- 7.2 There will be no limit to the number of races that may be sailed each day.

7.3 The scheduled time of the warning signal for the first race each day is 1300hrs.

7.4 On the last day of the regatta no warning signal will be made after 1530hrs.

## **8 CLASS FLAGS**

8.1 The class flags will be:

<u>Class</u>	<u>Flag</u>
Laser Std & Laser Radial	Laser class logo on white backing
Byte	Byte class logo on white backing
420 Spinnaker & Non-Spinnaker	420 class logo on red backing
470	Black letter '470' on light purple backing

8.2 Where the fleets are split into groups, the Group Flags shall be displayed in place of Class Flags.

## **9 RACING AREAS**

9.1 Course Alpha: Laser, Laser Radial, 420 Spinnaker, 420 Non-Spinnaker, 470  
Course Bravo: Byte

9.2 Attachment 1 shows the location of the racing areas.

## **10 THE COURSES**

The diagrams in Attachment 2 show the courses, the order in which marks are to be passed, and the side on which each mark is to be left.

## **11 MARKS**

11.1 Marks 1 and 4 will be orange conical marks.  
Marks 2 and 3 will be yellow conical marks.

11.2 New marks, as provided in instruction 13.1, will be pink spherical marks.

11.3 The starting marks will be the race committee signal boat and a committee boat.  
Instruction 12.2 will describe the starting line.

11.4 The finishing marks will be the race committee signal boat and a blue spherical buoy. Instruction 14 will describe the finishing line.

11.5 A race committee boat signalling a change of a leg of the course is a mark as provided in instruction 13.2.

## **12 THE START**

12.1 Races will be started using rule 26, with the warning signal given 5 minutes before the starting signal.

12.2 The starting line will be between the race committee signal boat and a committee boat each displaying an orange flag.

- 12.3 Classes may be started in any order.
- 12.4 Boats whose warning signal has not been made shall avoid the starting area during the starting sequence for other races.
- 12.5 A boat starting later than 4 minutes after her starting signal will be scored Did Not Start without a hearing. This changes rule A4 and A5.

### **13 CHANGE OF THE NEXT LEG OF THE COURSE**

- 13.1 To change the next leg of the course, the race committee will lay a new mark (or move the finishing line) and remove the original mark as soon as practicable. When in a subsequent change a new mark is replaced, it will be replaced by an original mark.
- 13.2 Except at a gate, boats shall pass between the race committee boat signalling the change of the next leg and the nearby mark, leaving the mark to port and the race committee boat to starboard. This changes rule 28.1.

### **14 THE FINISH**

The finishing line will be between a staff displaying a blue flag on the committee boat and the finishing mark.

### **15 PENALTY SYSTEM**

- 15.1 Appendix P will apply as changed by instructions 15.2 and 15.3.
- 15.2 On the first protest, if a boat is protested after she has finished, she will be given a scoring penalty of 6 points, without a hearing. If her score results in a score worse than DSQ, the penalty will be corresponding to DSQ.
- 15.3 Rule P2.3 will not apply and rule P2.2 is changed so that it will apply to any protest after the first one.
- 15.4 Action taken under Appendix P will not be grounds for redress by a competitor.

### **16 TIME LIMITS**

- 16.1 Time Limits are as follows:

<u>Class</u>	<u>Time Limit</u>
Laser/Laser Radial/Byte	80 minutes
420/470	90 minutes

- 16.2 Boats failing to finish within 20 minutes after the first boat sails the course and finishes, or within the time limit, whichever is the later, will be scored Did Not Finish without a hearing. This changes rules 35, A4 and A5.

### **17 PROTEST AND REQUESTS FOR REDRESS**

- 17.1 Protest forms are available at the race office, located at the National Sailing Centre.

Protests and requests for redress or reopening shall be delivered there within the protest time limit, accompanied by S\$30, which is refundable if the protest is not found frivolous.

- 17.2 For each class, the protest time limit is 60 minutes after the last boat has finished the last race of the day.
- 17.3 Notices will be posted no later than 30 minutes after the protest time limit to inform competitors of hearings in which they are parties or named as witnesses. Hearings will be held in the protest room, located on the second storey of the National Sailing Centre.
- 17.4 Notices of protests by the race committee or protest committee will be posted to inform boats under rule 61.1(b).
- 17.5 A list of boats that, under instruction 15.1, have been penalised for breaking rule 42 will be posted.
- 17.6 Breaches of instructions 12.4, 19, 24, 25, and 26 will not be grounds for a protest by a boat. This changes rule 60.1(a). Penalties for these breaches may be less than disqualification if the protest committee so decides. The scoring abbreviation for a discretionary penalty imposed under this instruction will be DPI.
- 17.7 On the last day scheduled day of racing, a request for reopening a hearing shall be delivered:
  - (a) within the protest time limit if the party requesting reopening was informed of the decision on the previous day;
  - (b) no later than 30 minutes after the party requesting reopening was informed of the decision on that day.This changes rule 66.
- 17.8 On the last scheduled day of racing, a request for redress based on a protest committee decision shall be delivered no later than 30 minutes after the decision was posted. This changes rule 62.2.

## **18 SCORING**

- 18.1 A maximum of 5 races are scheduled for each individual NSC Cup series.
- 18.2 Where a class is racing in groups;
  - (a) a race will be defined as one complete series of 2 starts and finishes of all 4 groups.
  - (b) each race of two groups will be scored as one race. Only races that have been completed for all 4 groups will count.
- 18.3 3 races are required to be completed to constitute an individual series.
- 18.4
  - (a) When fewer than 4 races have been completed, a boat's series score will be the total of her race scores.
  - (b) When 4 or more races have been completed, a boat's series score will be the total of her race scores excluding her worst score.

- 18.5 A maximum of 15 races are scheduled for the NSC Cup for each class.
- 18.6 (a) When fewer than 7 races have been completed, a boat's series score will be the total of her race scores.
- (b) When from 7 to 10 races have been completed, a boat's series score will be the total of her race scores excluding her worst score.
- (c) When 11 or more races have been completed, a boat's series score will be the total of her race scores excluding her two worst scores.
- 18.7 Scoring for the NSC Cup will be in accordance with rule A9 of Appendix A.

## **19 SAFETY REGULATIONS**

- 19.1 Buoyancy: All competitors shall wear personal flotation devices at all times whilst afloat.
- 19.2 A boat failing to comply with instruction 19.1 may be protested by the race committee or jury. The penalty is a DSQ in all the races of the day.
- 19.3 Check-out and check-in: Each boat shall personally sign-on on the forms provided at the Race Office prior to launching for the first race of the day. After arriving on shore, each boat shall personally sign-off on the forms provided within the protest time limit. Duplicate sign-on and sign-off forms may be provided at other neighbouring clubs.
- 19.4 A boat failing to comply with instruction 19.3 may be protested by the race committee. The penalty is a DSQ in the first race of the day.
- 19.5 A boat that retires from a race shall notify the race committee as soon as possible.

## **20 REPLACEMENT OF CREW OR EQUIPMENT**

- 20.1 Substitution of competitors will not be allowed without prior written approval of the race committee.
- 20.2 Substitution of damaged or lost equipment will not be allowed unless authorised by the race committee. Requests for substitution shall be made to the committee at the first reasonable opportunity.

## **21 EQUIPMENT AND MEASUREMENT CHECKS**

A boat or equipment may be inspected at any time for compliance with the class rules and sailing instructions. On the water, a boat can be instructed by a race committee measurer to proceed immediately to a designated area for inspection.

## **22 FOUL LANGUAGE**

Foul language is prohibited during this regatta. Any competitor emitting foul language loud enough to be heard by another person, regardless of at whom the foul language was directed, shall be subject to a hearing under RRS 69. Any boat may file a report against another boat from which it heard foul language. On the

first offense, the penalty is a DNE when the incident is deemed by the protest committee to be in breach of good manners. Upon a second offense, the penalty is a DNE for all races raced during the day of the offense. Upon the third offense, the penalty is a disqualification from the regatta.

## 23 OFFICIAL BOATS

Official boats will be identified by a white flag with the letter corresponding to the course area.

## 24 SUPPORT BOATS

Team leaders, coaches and other support personnel shall stay outside areas where boats are racing from the time of the preparatory signal for the first class to start until all boats have finished or the race committee signals a postponement, general recall or abandonment.

## 25 TRASH DISPOSAL

Boats shall not put trash in the water. Trash may be placed aboard support and race committee boats.

## 26 RADIO COMMUNICATION

Except in an emergency, a boat shall neither make radio transmissions while racing nor receive radio communications not available to all boats. This restriction also applies to mobile telephones.

## 27 PRIZES

Prizes will be given as follows:

**Laser** 1<sup>st</sup> to 3<sup>rd</sup>

**Laser Radial** 1<sup>st</sup> to 3<sup>rd</sup>

### **Byte**

Open Division 1<sup>st</sup> to 5<sup>th</sup>

Ladies Division 1<sup>st</sup> to 3<sup>rd</sup>

**420 Spinnaker** 1<sup>st</sup> to 3<sup>rd</sup>

1<sup>st</sup> to 3<sup>rd</sup>

**420 Non-Spinnaker**

**470** 1<sup>st</sup> to 3<sup>rd</sup>

### **NSC Cup Overall Prizes**

Laser Std Series Champion NSC Cup Laser Std Challenge Plaque

Laser Radial Series Champion NSC Cup Laser Radial Challenge Plaque

Byte Series Champion NSC Cup Byte Challenge Plaque

420 Series Champion NSC Cup 420 Challenge Plaque

## **28 DISCLAIMER OF LIABILITY**

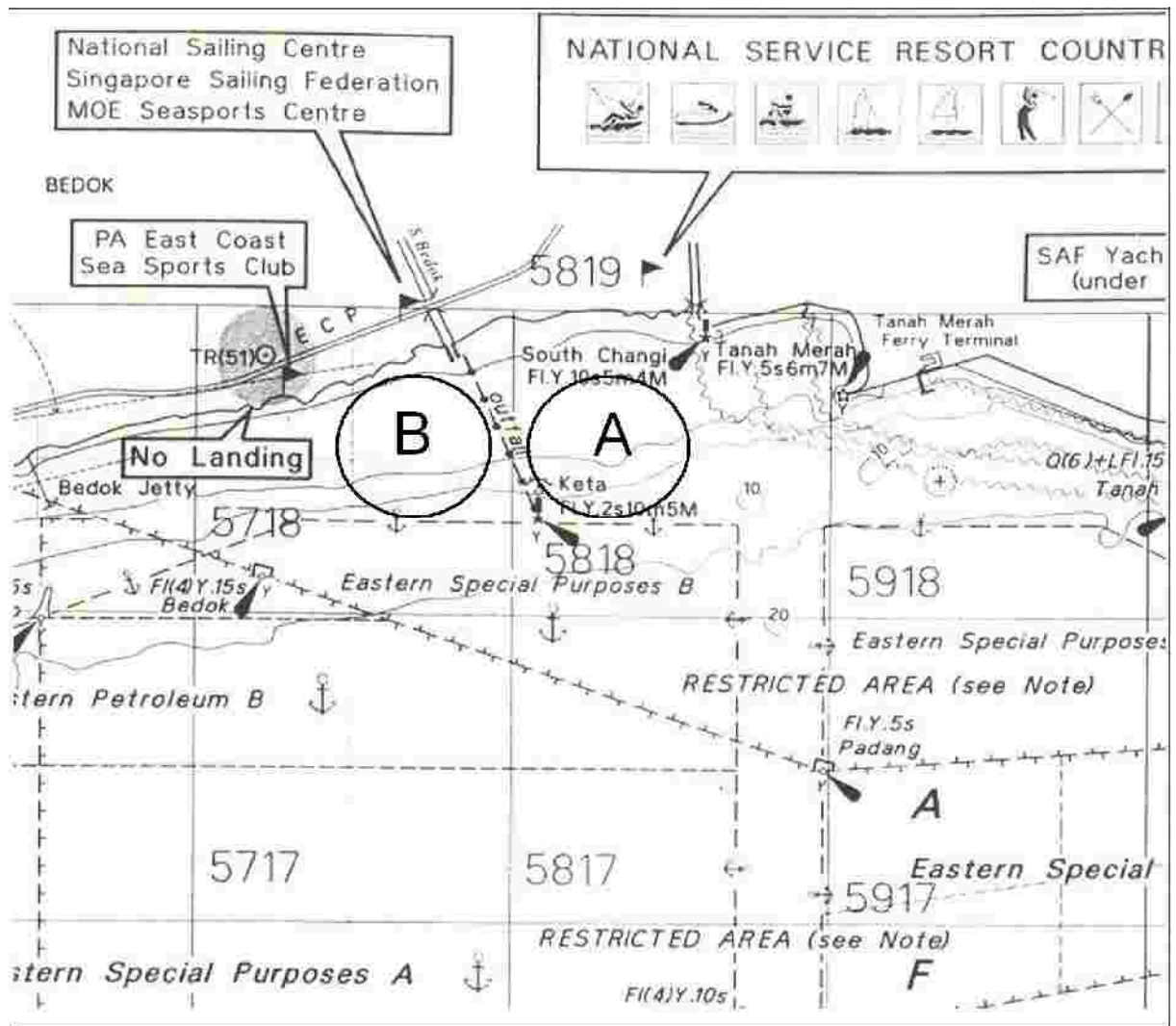
Competitors participate in the regatta entirely at their own risk, See rule 4, Decision to Race. The organising authority will not accept any liability for material damage or personal injury or death sustained in conjunction with or prior to, during, or after the regatta.

## **29 INSURANCE**

All competitors are required to have appropriate insurance coverage.

# ATTACHMENT 1

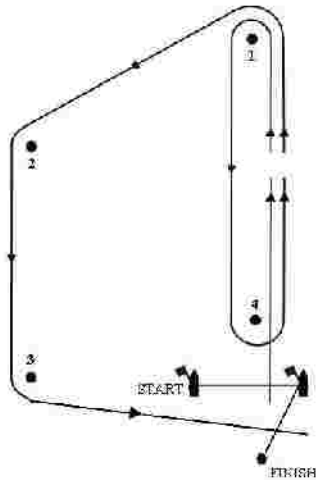
## RACING AREAS



## ATTACHMENT 2 - Courses

### COURSE AREA

#### Trapezoid Courses (All marks to port)



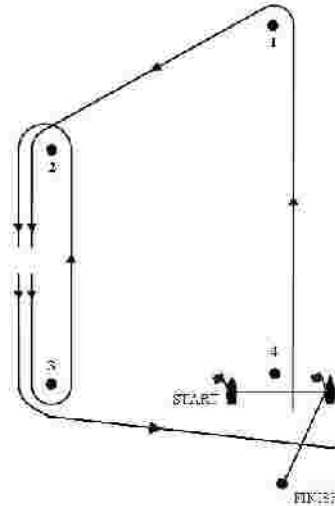
Trapezoid Inner

#### **Course Flag "I1" (Inner Loop – 1 lap)**

Start – 1 – 4 – 1 – 2 – 3 – Finish

#### **Course Flag "I2" (Inner Loop – 2 laps)**

Start – 1 – 4 – 1 – 4 – 1 – 2 – 3 – Finish



Trapezoid Outer

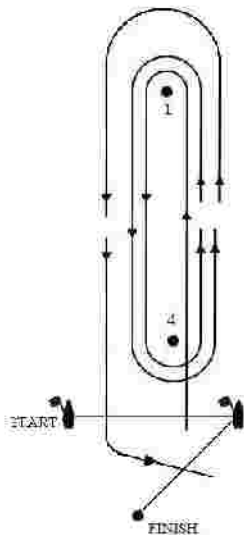
#### **Course Flag "O1" (Outer Loop – 1 lap)**

Start – 1 – 2 – 3 – 2 – 3 – Finish

#### **Course Flag "O2" (Outer Loop – 2 laps)**

Start – 1 – 2 – 3 – 2 – 3 – 2 – 3 – Finish

#### Windward / Leeward Courses (All marks to port)



#### **Course Flag "W1"**

Start – 1 – 4 – 1 – Finish

#### **Course Flag "W 2"**

Start – 1 – 4 – 1 – 4 – 1 – Finish