



## PESTA SUKAN REGATTA

01 – 02 Aug 2009

National Sailing Centre, Singapore

Organising Authority: Singapore Sailing Federation

### NOTICE OF RACE

#### 1 RULES

- 1.1 The regatta will be governed by the *rules* as defined in *The Racing Rules of Sailing*.

#### 2 ADVERTISING

Advertising will be restricted to Category C.

#### 3 ELIGIBILITY AND ENTRY

- 3.1 The regatta is open to all boats of the Optimist, Byte, Laser, Laser Radial, 420 Spinnaker, 420 Non-Spinnaker, Bic Techno, RSX, Mistral One Design and Formula classes who are members of a club affiliated to SingaporeSailing, or in the case of international entrants, are members of a club affiliated to their own national authority.
- 3.2 Singaporean Optimist competitors must have at least SOF Opti-Racer certification. Singaporean 420 Spinnaker competitors must have at least SingaporeSailing Level 2 Proficiency certification. All other Singaporean competitors must have at least SingaporeSailing Level 1 Proficiency certification or its equivalent.
- 3.3 Eligible boats may enter by completing the attached form and sending it, together with the required fee, to
- Singapore Sailing Federation  
1500 East Coast Parkway  
National Sailing Centre  
Singapore 468963  
Tel: +65 6444 4555  
Website: [www.sailing.org.sg](http://www.sailing.org.sg)
- by closing date, **30 July 2009**.
- 3.4 Late entries may be accepted at the discretion of the Organising Authority, and will be subjected to a late entry fee.

3.5 A minimum of 6 entries is required to form a class.

#### 4 FEES

4.1 The entry fees (inclusive of GST) are as follows:

	<u>By 30 Jul</u>	<u>After 30 Jul</u>
Single-handed	\$32.10	\$48.15
Double-Handed	\$48.15	\$72.25

4.2 The fees are non-refundable.

#### 5 QUALIFYING AND FINAL SERIES

5.1 When more than 80 entries are received at the close of entries for a class, the regatta may consist of a qualifying series and a final series for that class.

5.2 The entire fleet will be divided into 4 groups. The seeding of boats into the 4 groups will be based on the current National Ranking where available or another method as determined by the Organising Authority. The seeding will be done as soon as possible after the closing of entries and shall not be subject to redress. This changes rule 60.1(b).

5.3 Each qualifying race shall consist of 2 groups racing together and where possible each group shall race each other group an equal number of times.

5.4 Groups may be started in any order however the Race Committee will attempt to start as follows:

<b>Race No.</b>	<b>Groups</b>	<b>Colours</b>	<b>Race No.</b>	<b>Groups</b>	<b>Colours</b>
Race 1A	1 & 2	White & Brown	Race 1B	3 & 4	Yellow & Pink
Race 2A	2 & 4	Brown & Pink	Race 2B	1 & 3	White & Yellow
Race 3A	1 & 4	White & Pink	Race 3B	2 & 3	Brown & Yellow

5.5 The Group Flags shall be displayed in place of Class Flags. All boats will display a coloured ribbon (corresponding with the colour of their groups) attached securely to the top of their mast or sprit. The organiser will provide these ribbons.

5.6 The group flags and colours are:

- Group 1 – White
- Group 2 – Brown
- Group 3 – Yellow
- Group 4 – Pink

5.7 When more than 4 groups are required, appropriate measures will be taken.

5.8 Boats will be assigned to final-series fleets Gold, Silver, Bronze, etc., on the basis of their ranks in the qualifying-series. The final-series fleets will have, as nearly as

possible, equal size but so that the Silver fleet is not larger than the Gold fleet, etc. Boats with the best qualifying-series ranks will race all final-series races in the Gold fleet, boats with the next-best qualifying-series ranks will race in the Silver fleet, etc.

- 5.9 Any recalculation of qualifying-series ranking after boats have been assigned to final-series fleets will not affect the assignments except that a redress decision may promote a boat to a higher fleet.

## **6 SCHEDULE**

<i>Date</i>		<i>Time of 1<sup>st</sup> warning signal</i>
01 Aug 2009	Racing	1430 hrs
02 Aug 2009	Racing	1100 hrs

- 6.2 There will be no limit to the number of races per day.
- 6.3 On the last day of the regatta no warning signal will be made after 1530hrs.

## **7 SAILING INSTRUCTIONS**

The sailing instructions will be available after the closing date at the National Sailing Centre.

## **8 VENUE**

- 8.1 Course Area Alpha: Byte  
Course Area Bravo: Optimist  
Course Charlie: Laser, Laser Radial, 420, Windsurfing
- 8.2 Attachment 1 shows the location of the racing areas.

## **9 THE COURSES**

The diagrams in Attachment 2 show the courses, the order in which marks are to be passed, and the side on which each mark is to be left.

## **10 PENALTY SYSTEM**

- 10.1 Appendix P will apply as changed by instructions 10.2 and 10.3
- 10.2 Rule P2.1 is changed such that on the first protest, if a boat is protested after she has finished, she will be given a scoring penalty of 6 points, without a hearing. If her score results in a score worse than DSQ, the penalty will be corresponding to DSQ.
- 10.3 Rule P2.3 will not apply and rule P2.2 is changed so that it will apply to any protest after the first one.
- 10.4 Action taken under Appendix P will not be grounds for redress by a competitor.
- 10.5 Appendix P will not apply to the Windsurfing classes.

## **11 SCORING**

11.1 A maximum of 7 races are scheduled.

11.2 When a qualifying series and a final series are organised,

### Qualifying Series

- (a) At least 3 qualifying races are required to be completed for each group to constitute the qualifying series and to enter the final series.
- (b) The qualifying series will be concluded at the end of the racing day on which 3 or more qualifying races have been completed.
- (c) When at least 3 qualifying races are sailed, a boat's qualifying score will be the total of her race scores.
- (d) A minimum of 3 qualifying races are required to be completed to constitute a regatta.

### Final Series

- (e) The final series shall consist of all remaining races not sailed in the qualifying series. All the race scores in the qualifying and final series shall be used in determining the final series score, less any discards allowed.
  - (f) When 4 or more qualifying and final series races (combined) have been completed for a particular fleet, a boat's series score in that fleet shall be the total of her race scores excluding her worst excludable score.
  - (g) The number of final series races need not be equal for all final series groups.
- 11.3 When no qualifying series is organised, a minimum of 3 races are required to be completed to constitute a series.
- (a) When fewer than 4 races have been completed, a boat's series score will be the total of her race scores.
  - (b) When 4 or more races have been completed, a boat's series score will be the total of her scores excluding her worst excludable score.
- 11.4 There will be only one final official ranking list for the regatta and for each class. Boats in the gold fleet will rank higher than those in the silver fleet, who shall in turn be ranked higher than those in bronze fleet, etc.
- 11.5 If the minimum number of races required for the qualifying series is not completed on the first scheduled race day, the regatta shall continue on the next scheduled race day, using the qualifying series grouping system.

## **12 RADIO COMMUNICATION**

Except in an emergency, a boat shall neither make radio transmissions while racing nor receive radio communications not available to all boats. This restriction also applies to mobile telephones.

## **13 PRIZES**

Prizes will be awarded as follows:

**Optimist**

Gold Fleet 1<sup>st</sup> to 5<sup>th</sup>

Silver Fleet 1<sup>st</sup> to 5<sup>th</sup>

Bronze Fleet (If applicable) 1<sup>st</sup> to 5<sup>th</sup>

**Byte**

Gold Fleet 1<sup>st</sup> to 5<sup>th</sup>

Silver Fleet 1<sup>st</sup> to 5<sup>th</sup>

Bronze Fleet (If applicable) 1<sup>st</sup> to 5<sup>th</sup>

**Laser**

1<sup>st</sup> to 5<sup>th</sup>

**Laser Radial**

1<sup>st</sup> to 5<sup>th</sup>

**420 Spinnaker**

1<sup>st</sup> to 3<sup>rd</sup>

**420 Non-Spinnaker**

1<sup>st</sup> to 3<sup>rd</sup>

**Bic Techno**

1<sup>st</sup> to 3<sup>rd</sup>

**RSX**

1<sup>st</sup> to 3<sup>rd</sup>

**Mistral One Design**

1<sup>st</sup> to 3<sup>rd</sup>

**Formula**

1<sup>st</sup> to 3<sup>rd</sup>

**14 DISCLAIMER OF LIABILITY**

Competitors participate in the regatta entirely at their own risk, See rule 4, Decision to Race. The organising authority will not accept any liability for material damage or personal injury or death sustained in conjunction with or prior to, during, or after the regatta.

**15 INSURANCE**

All competitors and boats are required to have appropriate insurance coverage.



**Pesta Sukan Regatta  
01 – 02 Aug 2009, National Sailing Centre  
Entry Form**

Attn: Singapore Sailing Federation  
1500 East Coast Parkway  
National Sailing Centre  
Singapore 468963

Tel: +65 6444 4555  
Fax: +65 6448 0485  
Website: www.sailing.org.sg

Helm's Name: \_\_\_\_\_  
(Enter full name)

NRIC: \_\_\_\_\_

Class of Boat: \_\_\_\_\_  
(Pls indicate clearly)

Sail No: \_\_\_\_\_

School: \_\_\_\_\_

Club: \_\_\_\_\_

Home Addr: \_\_\_\_\_

Date of Birth: \_\_\_\_\_

\_\_\_\_\_

Sex: \_\_\_\_\_

Email: \_\_\_\_\_

Tel No: \_\_\_\_\_

Crew's Name: \_\_\_\_\_

Mobile: \_\_\_\_\_

**Entry Fees**

The entry fee (inclusive of GST) is non-refundable:

	<u>By 30 Jul</u>	<u>After 30 Jul</u>
Single-handed	\$32.10	\$48.15
Double-handed	\$48.15	\$72.25

Enclosed is S\$\_\_\_\_\_ being payment for the entry fee.

**Declaration by competitor**

I/We agree to be bound by the Racing Rules of Sailing.

I/We acknowledge and accept the risks associated with participation in the regatta and waive all rights against and release the Organising Authority in respect of any loss of life and injury to persons, or loss of or damage to property, suffered in connection therewith; and acknowledge that participation in the regatta is entirely at my/our own risk and responsibility.

\_\_\_\_\_  
Helm's  
Signature

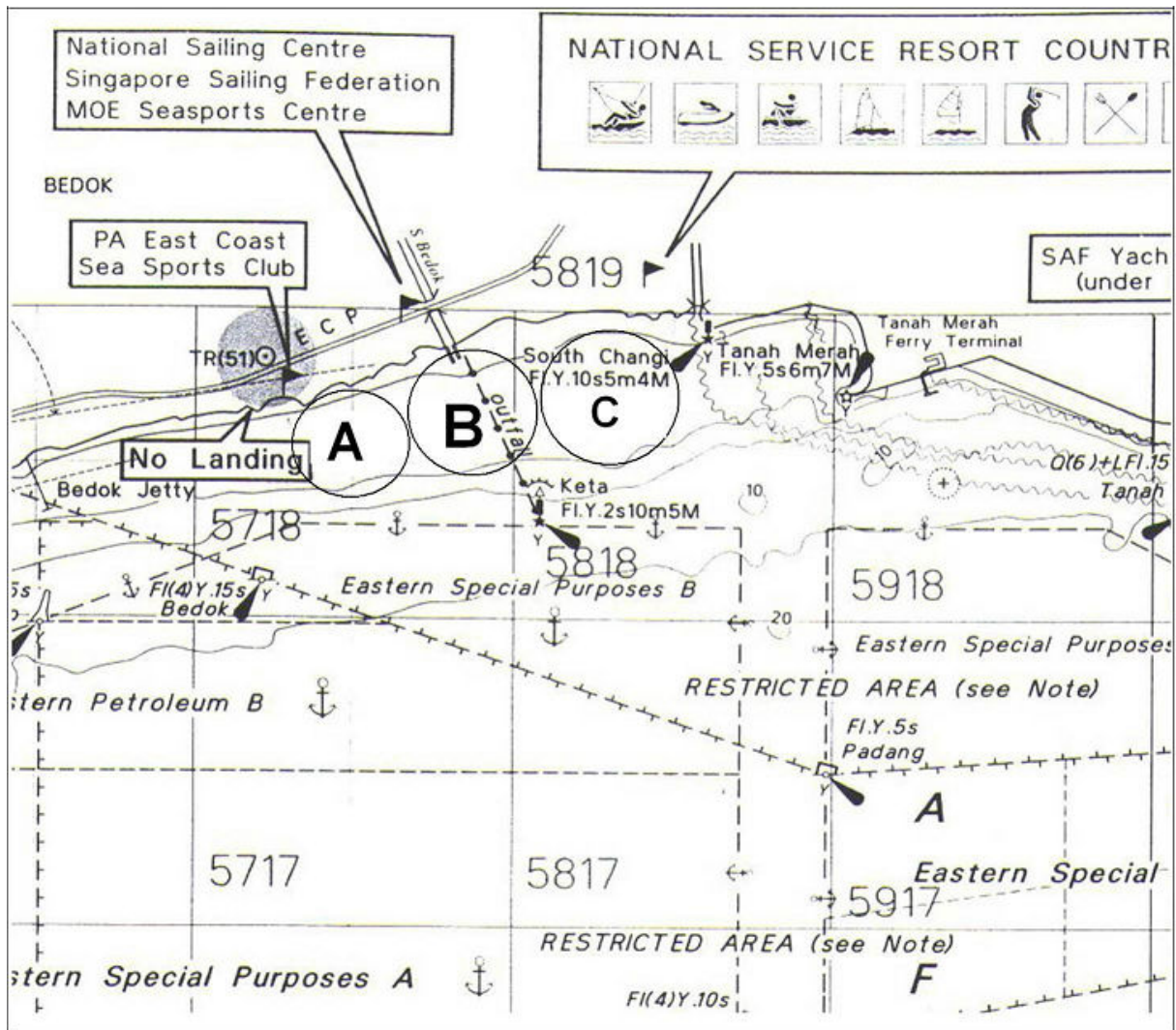
\_\_\_\_\_  
Parent's Signature  
(Required for sailors below  
21 years old)

\_\_\_\_\_  
Crew's  
Signature

\_\_\_\_\_  
Parent's Signature  
(Required for sailors below  
21 years old)

# ATTACHMENT 1

## RACING AREAS



## ATTACHMENT 2 - Courses

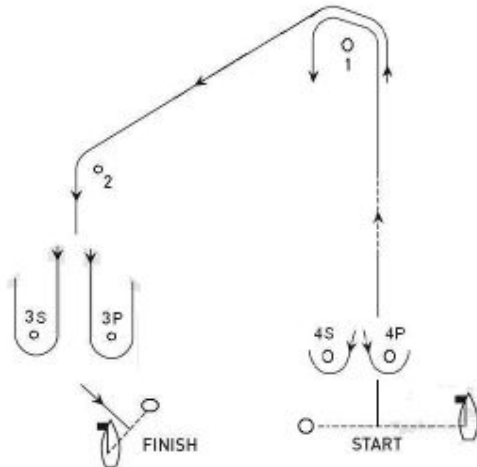
Course Area Alpha: Byte

Course Area Bravo: Optimist

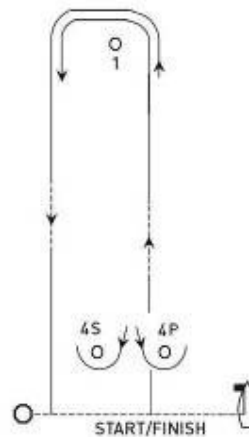
### The Gate

Is formed between 3P and 3S(outer loop); 4P and 4S(inner loop); as shown in the diagram.

### Trapezoid Course



### Windward / Leeward Course



### *Trapezoid Course*

(All marks to port except defined in gate rounding)

### *Windward / Leeward Course*

(All marks to port except defined in gate rounding)

### **Course Flag "O1" (Outer Loop – 1 lap)**

Start – 1 – 2 – 3 – 2 – 3 – Finish

### **Course Flag "W 1"**

Start – 1 – 4 – 1 – Finish

### **Course Flag "O2" (Outer Loop – 2 laps)**

Start – 1 – 2 – 3 – 2 – 3 – 2 – 3 – Finish

### **Course Flag "W 2"**

Start – 1 – 4 – 1 – 4 – 1 – Finish

### **Course Flag "I1" (Inner Loop – 1 lap)**

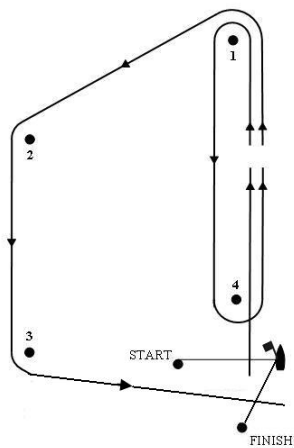
Start – 1 – 4 – 1 – 2 – 3 – Finish

### **Course Flag "I2" (Inner Loop – 2 laps)**

Start – 1 – 4 – 1 – 4 – 1 – 2 – 3 – Finish

## Course Charlie: Laser, Laser Radial, 420, Windsurfing

### Trapezoid Courses (All marks to port)



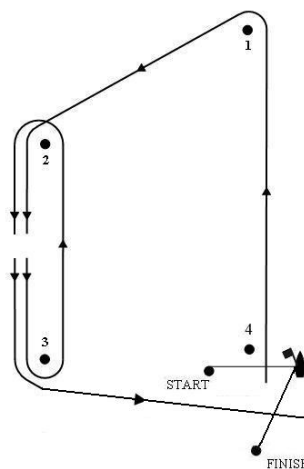
Trapezoid Inner

**Course Flag "I1" (Inner Loop – 1 lap)**

Start – 1 – 4 – 1 – 2 – 3 – Finish

**Course Flag "I2" (Inner Loop – 2 laps)**

Start – 1 – 4 – 1 – 4 – 1 – 2 – 3 – Finish



Trapezoid Outer

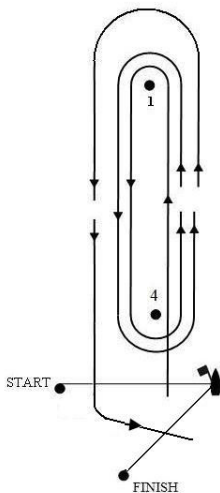
**Course Flag "O1" (Outer Loop – 1 lap)**

Start – 1 – 2 – 3 – 2 – 3 – Finish

**Course Flag "O2" (Outer Loop – 2 laps)**

Start – 1 – 2 – 3 – 2 – 3 – 2 – 3 – Finish

### Windward / Leeward Courses (All marks to port)



**Course Flag "W1"**

Start – 1 – 4 – 1 – Finish

**Course Flag "W2"**

Start – 1 – 4 – 1 – 4 – 1 – Finish