



# SENTOSA OPTIMIST OPEN CHAMPIONSHIP

09 – 13 June 2009

National Sailing Centre, Singapore

Organising Authority: Singapore Sailing Federation

## SAILING INSTRUCTIONS

### 1 RULES

- 1.1 The regatta will be governed by the *rules* as defined in The Racing Rules of Sailing.
- 1.2 No national prescriptions will apply.
- 1.3 If there is a conflict between languages the English text will take precedence.

### 2 ADDITIONAL INFORMATION

If the number of entries requires fleet grouping, while racing each boat shall display a coloured ribbon corresponding to the fleet to which she has been assigned and attached to her mast top or sprit. Ribbons and instructions for attachment will be available from the race office.

### 3 NOTICES TO COMPETITORS

Notices to competitors will be posted on the official notice board located at National Sailing Centre.

### 4 CHANGES TO SAILING INSTRUCTIONS

Any change to the sailing instructions will be posted before 0930hrs on the day it will take effect, except that any change to the schedule of races will be posted by 1800hrs on the day before it will take effect.

### 5 SIGNALS MADE ASHORE

- 5.1 Signals made ashore will be displayed on the flag staff located within the National Sailing Centre grounds.
- 5.2 When flag AP is displayed ashore, '1 minute' is replaced with 'not less than 30 minutes' in race signal AP.



**5.3 A boat shall not launch until Flag D is displayed with 1 sound signal.**

## **6 FORMAT OF RACING**

6.1 If the number of entries received for any class at the close of entries is less than 80, the regatta will consist of a single series for that class.

6.2 If the number of entries received for any class at the close of entries is more than 80, the regatta will consist of a qualifying series and a final series for that class.

6.3 For the qualifying series, the entire fleet will be divided into 4 groups: White, Yellow, Pink, and Brown. When more than 4 groups are required, appropriate measures will be taken. The seeding of boats into the 4 groups will be based on the current National Ranking where available or another method as determined by the Organising Authority. The seeding will be done as soon as possible after the closing of entries and shall not be subject to protest. This changes rule 60.1(b).

- 6.4 (a) Each race of the qualifying series shall consist of 2 groups racing together and where possible each group shall race each other group an equal number of times.
- (b) Groups may be started in any order however the Race Committee will attempt to start as follows:

<b>Race No.</b>	<b>Groups</b>	<b>Colours</b>	<b>Race No.</b>	<b>Groups</b>	<b>Colours</b>
Race 1A	1 & 2	White & Brown	Race 1B	3 & 4	Yellow & Pink
Race 2A	2 & 4	Brown & Pink	Race 2B	1 & 3	White & Yellow
Race 3A	1 & 4	White & Pink	Race 3B	2 & 3	Brown & Yellow
Race 4A	3 & 4	Yellow & Pink	Race 4B	1 & 2	White & Brown
Race 5A	1 & 3	White & Yellow	Race 5B	2 & 4	Brown & Pink

- 6.5 (a) Boats will be assigned to final-series fleets Gold, Silver, Bronze, Emerald, etc., on the basis of their ranks in the qualifying-series. The final-series fleets will have, as nearly as possible, equal size but so that the Silver fleet is not larger than the Gold fleet, etc. Boats with the best qualifying-series ranks will race all final-series races in the Gold fleet, boats with the next-best qualifying-series ranks will race in the Silver fleet, etc.
- (b) Any recalculation of qualifying-series ranking after boats have been assigned to final-series fleets will not affect the assignments except that a redress decision may promote a boat to a higher fleet.



## 7 SCHEDULE OF RACES

- 7.1 Dates of racing:  
09 – 13 June 2009                      Racing
- 7.2 There will be no limit to the number of races that may be sailed each day.
- 7.3 The scheduled time of the warning signal for the first race each day is 1100hrs.
- 7.4 On the last day of the regatta no warning signal will be made after 1530hrs.

## 8 CLASS FLAGS

- 8.1 The class flag will be:
- | <u>Class</u> | <u>Flag</u>                    |
|--------------|--------------------------------|
| Optimist     | Optimist logo on white backing |
- 8.2 Where the fleets are split into groups, the Group Flags shall be displayed in place of Class Flags.

## 9 RACING AREAS

Attachment 1 shows the location of the racing areas.

## 10 THE COURSES

The diagrams in Attachment 2 show the courses, the order in which marks are to be passed, and the side on which each mark is to be left.

## 11 MARKS

- 11.1 Mark 1 will be an orange conical mark.  
Mark 2 will be a yellow conical mark.  
Gate 3 will be between a yellow conical mark and a pink spherical mark.  
Gate 4 will be between an orange conical mark and a pink spherical mark.
- 11.2 New marks, as provided in instruction 13.1, will be white spherical marks.
- 11.3 The starting marks will be the race committee signal boat and a yellow spherical buoy. Instruction 12.2 will describe the starting line.
- 11.4 The finishing marks will be the race committee signal boat and a blue spherical buoy. Instruction 14 will describe the finishing line.
- 11.5 A race committee boat signalling a change of a leg of the course is a mark as provided in instruction 13.2.



## **12 THE START**

- 12.1 Races will be started using rule 26, with the warning signal given 5 minutes before the starting signal.
- 12.2 The starting line will be between a staff displaying an orange flag on the race committee boat and the starting mark.
- 12.3 Boats whose warning signal has not been made shall avoid the starting area during the starting sequence for other races.
- 12.4 A boat starting later than 4 minutes after her starting signal will be scored Did Not Start without a hearing. This changes rule A4 and A5.

## **13 CHANGE OF THE NEXT LEG OF THE COURSE**

- 13.1 To change the next leg of the course, the race committee will lay a new mark (or move the finishing line) and remove the original mark as soon as practicable. When in a subsequent change a new mark is replaced, it will be replaced by an original mark.
- 13.2 Except at a gate, boats shall pass between the race committee boat signalling the change of the next leg and the nearby mark, leaving the mark to port and the race committee boat to starboard. This changes rule 28.1.

## **14 THE FINISH**

The finishing line will be between a staff displaying a blue flag on the committee boat and the finishing mark.

## **15 PENALTY SYSTEM**

- 15.1 Appendix P will apply as changed by instructions 15.2 and 15.3.
- 15.2 On the first protest, if a boat is protested after she has finished, she will be given a scoring penalty of 8 points, without a hearing. If her score results in a score worse than DSQ, the penalty will be corresponding to DSQ.
- 15.3 Rule P2.3 will not apply and rule P2.2 is changed so that it will apply to any protest after the first one.
- 15.5 Action taken under Appendix P will not be grounds for redress by a competitor.

## **16 TIME LIMITS**

- 16.1 Time Limits are as follows:

<u>Class</u>	<u>Time Limit</u>
Optimist	70 minutes



- 16.2 Boats failing to finish within 20 minutes after the first boat sails the course and finishes, will be scored Did Not Finish without a hearing. This changes rules 35, A4 and A5.

## **17 PROTEST AND REQUESTS FOR REDRESS**

- 17.1 Protest forms are available at the race office, located at the National Sailing Centre. Protests and requests for redress or reopening shall be delivered there within the protest time limit, accompanied by S\$30, which is refundable if the protest is not found frivolous.
- 17.2 For each class, the protest time limit is 60 minutes after the last boat has finished the last race of the day.
- 17.3 Notices will be posted no later than 30 minutes after the protest time limit to inform competitors of hearings in which they are parties or named as witnesses. Hearings will be held in the protest room, located on the second storey of the National Sailing Centre.
- 17.4 Notices of protests by the race committee or protest committee will be posted to inform boats under rule 61.1(b).
- 17.5 A list of boats that, under instruction 15.1, have been penalised for breaking rule 42 will be posted.
- 17.6 Breaches of instructions 12.4, 19, 24, 25, and 26 will not be grounds for a protest by a boat. This changes rule 60.1(a). Penalties for these breaches may be less than disqualification if the protest committee so decides. The scoring abbreviation for a discretionary penalty imposed under this instruction will be DPI.
- 17.7 On the last day scheduled day of racing, a request for reopening a hearing shall be delivered:
- (a) within the protest time limit if the party requesting reopening was informed of the decision on the previous day;
  - (b) no later than 30 minutes after the party requesting reopening was informed of the decision on that day.
- This changes rule 66.
- 17.8 On the last scheduled day of racing, a request for redress based on a protest committee decision shall be delivered no later than 30 minutes after the decision was posted. This changes rule 62.2.

## **18 SCORING**

- 18.1 A maximum of 12 races are scheduled.
- 18.2 When a qualifying series and a final series are organised,



### Qualifying Series

- (a) At least 5 qualifying races are required to be completed for each group to constitute the qualifying series and to enter the final series.
- (b) The qualifying series will be concluded at the end of the racing day on which 5 or more qualifying races have been completed.
- (c) When at least 5 qualifying races are sailed, a boat's qualifying score will be the total of her race scores excluding her worst excludable score.
- (d) A minimum of 5 qualifying races are required to be completed to constitute a regatta.

### Final Series

- (e) The final series shall consist of all remaining races not sailed in the qualifying series. All the race scores in the qualifying and final series shall be used in determining the final series score, less any discards allowed.
  - (f) When 7 or more qualifying and final series races (combined) have been completed for a particular fleet, a boat's series score in that fleet shall be the total of her race scores excluding her worst excludable score.
  - (g) When 9 or more qualifying and final series races (combined) have been completed for a particular fleet, a boat's series score in that fleet shall be the total of her race scores excluding her two worst excludable scores.
  - (h) The number of final series races need not be equal for all final series groups.
- 18.3 When no qualifying series is organised, a minimum of 5 races are required to be completed to constitute a series.
- (a) When fewer than 7 races have been completed, a boat's series score will be the total of her race scores.
  - (b) When from 7 to 8 races have been completed, a boat's series score will be the total of her race scores excluding her worst excludable score.
  - (c) When 9 or more races have been completed, a boat's series score will be the total of her race scores excluding her two worst excludable scores.
- 18.4 There will be only one final official ranking list for the regatta and for each class. Boats in the gold fleet will rank higher than those in the silver fleet, who shall in turn be ranked higher than those in bronze fleet, etc.
- 18.5 In RRS A4.2 replace 'number of boats entered in the series' with 'number of boats entitled to start in the largest group'.

## **19 SAFETY REGULATIONS**

- 19.1 Buoyancy: All competitors shall wear personal flotation devices at all times whilst afloat.
- 19.2 A boat failing to comply with instruction 19.1 may be protested by the race committee or jury. The penalty is a DSQ in all the races of the day.
- 19.3 Check-out and check-in: Each boat shall personally sign-on on the forms provided at the Race Office prior to launching for the first race of the day. After arriving on shore, each boat shall personally sign-off on the forms provided within the protest time limit. Duplicate sign-on and sign-off forms may be provided at other



neighbouring clubs.

- 19.4 A boat failing to comply with instruction 19.3 may be protested by the race committee. The penalty is a DSQ in the first race of the day.
- 19.5 A boat that retires from a race shall notify the race committee as soon as possible.

## **20 REPLACEMENT OF EQUIPMENT**

- 20.1 Substitution of damaged or lost equipment will not be allowed unless authorised by the race committee. Requests for substitution shall be made to the committee at the first reasonable opportunity.

## **21 EQUIPMENT AND MEASUREMENT CHECKS**

A boat or equipment may be inspected at any time for compliance with the class rules and sailing instructions. On the water, a boat can be instructed by a race committee measurer to proceed immediately to a designated area for inspection.

## **22 FOUL LANGUAGE**

Foul language is prohibited during this regatta. Any competitor emitting foul language loud enough to be heard by another person, regardless of at whom the foul language was directed, shall be subject to a hearing under RRS 69. Any boat may file a report against another boat from which it heard foul language. On the first offense, the penalty is a DNE when the incident is deemed by the protest committee to be in breach of good manners. Upon a second offense, the penalty is a DNE for all races raced during the day of the offense. Upon the third offense, the penalty is a disqualification from the regatta.

## **23 OFFICIAL BOATS**

Official boats will be identified by a white flag with the letter corresponding to the course area.

## **24 SUPPORT BOATS**

Team leaders, coaches and other support personnel shall stay outside areas where boats are racing from the time of the preparatory signal for the first class to start until all boats have finished or the race committee signals a postponement, general recall or abandonment.

## **25 TRASH DISPOSAL**

Boats shall not put trash in the water. Trash may be placed aboard support and race committee boats.



## 26 RADIO COMMUNICATION

Except in an emergency, a boat shall neither make radio transmissions while racing nor receive radio communications not available to all boats. This restriction also applies to mobile telephones.

## 27 PRIZES

Prizes will be given as follows:

### Optimist

<u>Gold Fleet</u>	1 <sup>st</sup> to 10 <sup>th</sup>
Boys Challenge Trophy	1 <sup>st</sup> Boy
Girls Challenge Trophy	1 <sup>st</sup> Girl
<u>Silver Fleet</u>	1 <sup>st</sup> to 10 <sup>th</sup>
<u>Bronze Fleet</u> (If applicable)	1 <sup>st</sup> to 10 <sup>th</sup>

## 28 DISCLAIMER OF LIABILITY

Competitors participate in the regatta entirely at their own risk, See rule 4, Decision to Race. The organising authority will not accept any liability for material damage or personal injury or death sustained in conjunction with or prior to, during, or after the regatta.

## 29 INSURANCE

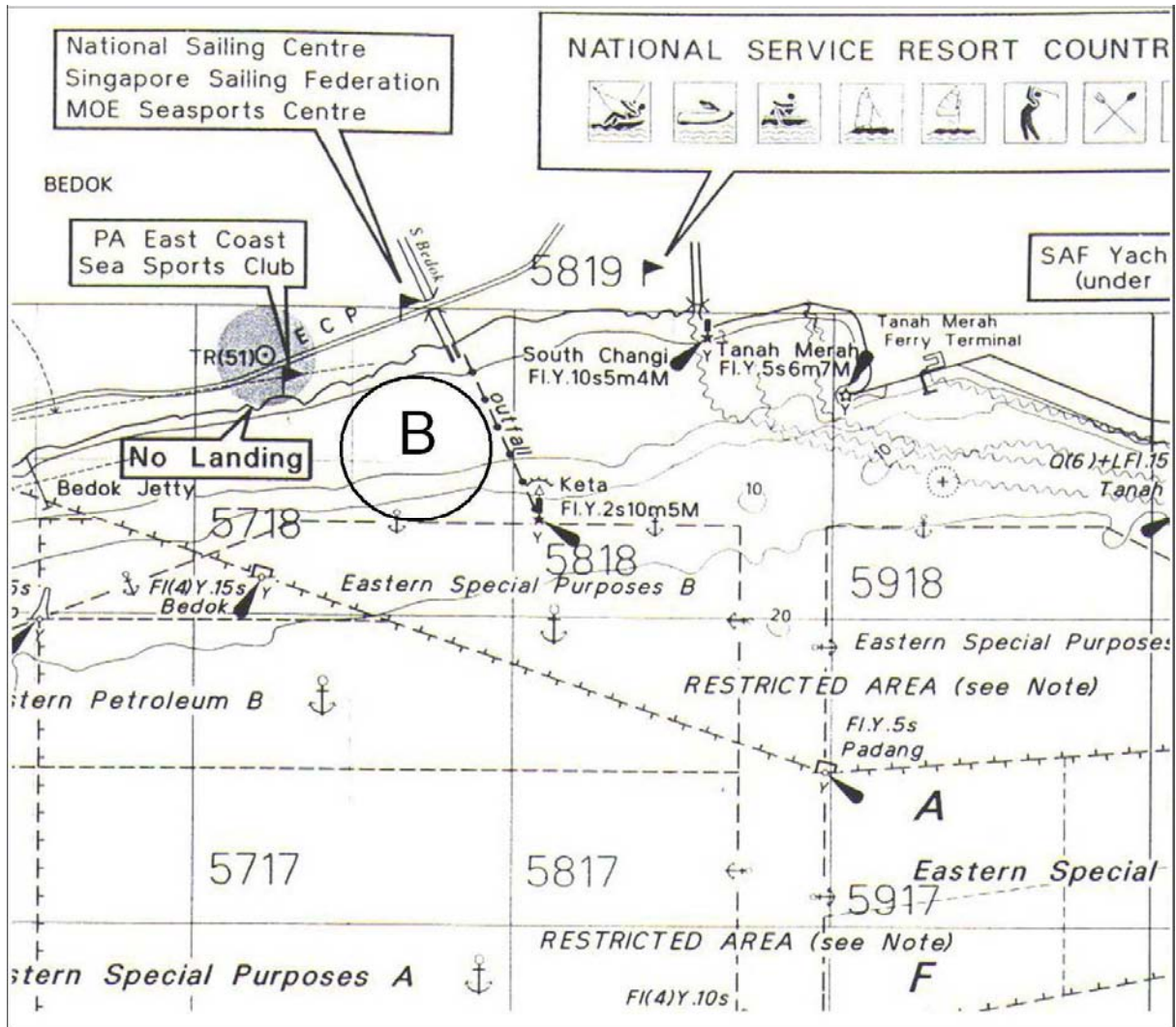
All competitors are required to have appropriate insurance coverage.



**ATTACHMENT 1**

**RACING AREAS**

**COURSE AREA BRAVO**



## ATTACHMENT 2 - COURSES

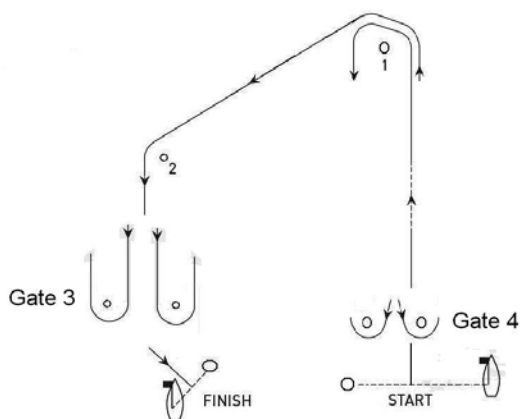
### COURSE AREA BRAVO

#### The Gate

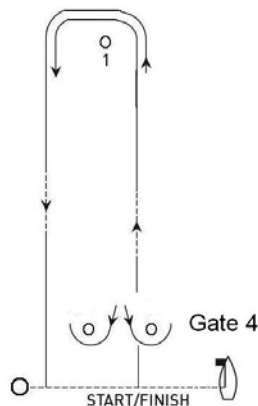
is formed between 2 round marks as shown in the diagram.

When required as part of the course, a sailor is required to sail through the gate from the direction of the previous mark.

#### Trapezoid Course



#### Windward / Leeward Course



#### *Trapezoid Courses*

(All marks to port except defined in gate rounding)

#### **Course Flag “O1” (Outer Loop – 1 lap)**

Start, Mark 1, Mark 2, Gate 3, Mark 2, Gate 3, Finish

#### **Course Flag “O2” (Outer Loop – 2 laps)**

Start, Mark 1, Mark 2, Gate 3, Mark 2, Gate 3, Mark 2, Gate 3, Finish

#### **Course Flag “I1” (Inner Loop – 1 lap)**

Start, Mark 1, Gate 4, Mark 1, Mark 2, Gate 3, Finish

#### **Course Flag “I2” (Inner Loop – 2 laps)**

Start, Mark 1, Gate 4, Mark 1, Gate 4, Mark 1, Mark 2, Gate 3, Finish

#### *Windward / Leeward Courses*

(All marks to port except defined in gate rounding)

#### **Course Flag “W 1”**

Start, Mark 1, Gate 4, Mark 1, Finish

#### **Course Flag “W 2”**

Start, Mark 1, Gate 4, Mark 1, Gate 4, Mark 1, Finish