



22nd SINGAPORE LASER TROPHY

02 – 06 June 2010

National Sailing Centre, Singapore

Organising Authority: Singapore Sailing Federation

SAILING INSTRUCTIONS

1 RULES

- 1.1 The regatta will be governed by the *rules* as defined in The Racing Rules of Sailing.
- 1.2 No national prescriptions will apply.

2 NOTICES TO COMPETITORS

Notices to competitors will be posted on the official notice board located at the National Sailing Centre.

3 CHANGES TO SAILING INSTRUCTIONS

Any change to the sailing instructions will be posted one hour before the displaying of flag 'D' on the day it will take effect, except that any change to the schedule of races will be posted by 1800hrs on the day before it will take effect.

4 SIGNALS MADE ASHORE

- 4.1 Signals made ashore will be displayed on the flag staff located within the National Sailing Centre grounds.
- 4.2 When flag AP is displayed ashore, '1 minute' is replaced with 'not less than 30 minutes' in race signal AP.
- 4.3 **A boat shall not launch until Flag D is displayed.**

Flag D is displayed with 1 sound signal.

Flag D means: 'The warning signal will be made not less than 30 minutes after flag D is displayed. Boats shall not launch until this signal is made'.

5 SCHEDULE OF RACES

- 5.1 Racing is from 02 – 06 June 2010.

- 5.2 The scheduled time of the warning signal for the first race each day is 1100.
- 5.3 There will be no limit to the number of races that may be sailed each day.
- 5.4 On the last day of the regatta no warning signal will be made after 1530.

6 CLASS FLAGS

- 6.1 The class flags will be:

<u>Class</u>	<u>Flag</u>
Laser Standard	Laser logo on 'white backing'
Laser Radial	Laser logo on 'yellow backing'

7 RACING AREAS

Attachment 1 shows the location of the racing areas.

8 THE COURSES

The diagrams in Attachment 2 show the courses, the order in which marks are to be passed, and the side on which each mark is to be left.

9 MARKS

- 9.1 Marks 1 and 4 will be orange conical marks.
Marks 2 and 3 will be yellow conical marks.
- 9.2 New marks, as provided in instruction 11.1, will be pink spherical marks.
- 9.3 The starting marks will be the race committee signal boat and the starting mark.
Instruction 10.2 will describe the starting line.
- 9.4 The finishing marks will be the race committee signal boat and the finishing mark.
Instruction 12.1 will describe the finishing line.
- 9.5 A race committee boat signalling a change of a leg of the course is a mark as provided in instruction 11.2.

10 THE START

- 10.1 Races will be started using rule 26, with the warning signal given 5 minutes before the starting signal.
- 10.2 The starting line will be between a staffs displaying an orange flags on the starting marks.
- 10.3 Boats whose warning signal has not been made shall avoid the starting area during the starting sequence for other races.

- 10.4 A boat failing to comply with Instructions 10.3 may be protested by the race committee or jury.
- 10.5 A boat starting later than 4 minutes after her starting signal will be scored Did Not Start without a hearing. This changes rule A4 and A5.

11 CHANGE OF THE NEXT LEG OF THE COURSE

- 11.1 To change the next leg of the course, the race committee will lay a new mark (or move the finishing line) and remove the original mark as soon as practicable. When in a subsequent change a new mark is replaced, it will be replaced by an original mark.
- 11.2 Except at a gate, boats shall pass between the race committee boat signalling the change of the next leg and the nearby mark, leaving the mark to port and the race committee boat to starboard. This changes rule 28.1.

12 THE FINISH

- 12.1 The finishing line will be between a staff displaying a blue flag on the committee signal boat and a blue conical buoy.

13 PENALTY SYSTEM

- 13.1 Appendix P will apply as changed by instructions 13.2 and 13.3.
- 13.2 On the first protest, if a boat is protested after she has finished, she will be given a scoring penalty of 6 points, without a hearing. If her score results in a score worse than DSQ, the penalty will be corresponding to DSQ.
- 13.3 Rule P2.3 will not apply and rule P2.2 is changed so that it will apply to any protest after the first one.
- 13.4 Action taken under Appendix P will not be grounds for redress by a competitor.

14 WHISTLE SYSTEM

To encourage the boats to take penalties afloat, jury members may blow a whistle when they see what they believe to be breach of a rule.

15 TIME LIMITS

- 15.1 Time limit for the first boat for both class to sail the course and finish is 70 minutes.
- 15.2 Boats failing to finish within 20 minutes after the first boat sails the course and finishes, will be scored Did Not Finish without a hearing. This changes rules 35, A4 and A5.

16 PROTEST AND REQUESTS FOR REDRESS

- 16.1 Protest forms are available at the race office, located at the National Sailing Centre. Protests and requests for redress or reopening shall be delivered there within the protest time limit, accompanied by S\$30, which is refundable if the protest is not found frivolous.
- 16.2 For each class, the protest time limit is 60 minutes after the last boat has finished the last race of the day.
- 16.3 Notices will be posted no later than 30 minutes after the protest time limit to inform competitors of hearings in which they are parties or named as witnesses. Hearings will be held in the protest room, located on the second storey of the National Sailing Centre.
- 16.4 Notices of protests by the race committee or protest committee will be posted to inform boats under rule 61.1(b).
- 16.5 A list of boats that, under instruction 13.1, have been penalised for breaking rule 42 will be posted.
- 16.6 Breaches of instructions 10.4, 18, 23, 24, and 25 will not be grounds for a protest by a boat. This changes rule 60.1(a). Penalties for these breaches may be less than disqualification if the protest committee so decides. The scoring abbreviation for a discretionary penalty imposed under this instruction will be DPI.
- 16.7 On the last day scheduled day of racing, a request for reopening a hearing shall be delivered:
- (a) within the protest time limit if the party requesting reopening was informed of the decision on the previous day;
 - (b) no later than 30 minutes after the party requesting reopening was informed of the decision on that day.
- This changes rule 66.
- 16.8 On the last scheduled day of racing, a request for redress based on a protest committee decision shall be delivered no later than 30 minutes after the decision was posted. This changes rule 62.2.

17 SCORING

- 17.1 A maximum of 15 races are scheduled.
- 17.2 A minimum of 5 races are required to be completed to constitute a series.
- (a) When fewer than 9 races have been completed, a boat's series score will be the total of her race scores.
 - (b) When from 9 to 11 races have been completed, a boat's series score will be the total of her race scores excluding her worst excludable score.
 - (c) When 12 or more races have been completed, a boat's series score will be the total of her race scores excluding her two worst excludable scores.

18 SAFETY REGULATIONS

- 18.1 Buoyancy: All competitors shall wear personal flotation devices at all times whilst afloat.
- 18.2 A boat failing to comply with instruction 18.1 may be protested by the race committee. The penalty is a DSQ in all the races of the day.
- 18.3 Check-out and check-in: Each boat shall personally sign-on on the forms provided at the Race Office prior to launching for the first race of the day. After arriving on shore, each boat shall personally sign-off on the forms provided within the protest time limit. Duplicate sign-on and sign-off forms may be provided at other neighbouring clubs.
- 18.4 A boat failing to comply with instruction 18.3 may be protested by the race committee. The penalty is a DSQ in the first race of the day.
- 18.5 A boat that retires from a race shall notify the race committee as soon as possible.

19 REPLACEMENT OF EQUIPMENT

- 19.1 Substitution of competitors will not be allowed without the prior written approval of the race committee.
- 19.2 Substitution of equipment, other than damaged or lost, will not be allowed. Substitution of damaged or lost equipment will not be allowed unless authorized by the race committee. Request for substitution shall be made to the committee at the first reasonable opportunity.

20 EQUIPMENT AND MEASUREMENT CHECKS

A boat or equipment may be inspected at any time for compliance with the class rules and sailing instructions. On the water, a boat can be instructed by a race committee measurer to proceed immediately to a designated area for inspection.

21 FOUL LANGUAGE

Foul language, deemed by the protest committee to be in breach of good manners, is prohibited during this regatta. Any competitor emitting foul language loud enough to be heard by another person, regardless at whom the foul language was directed, shall be subject to a hearing under RRS 69. Any boat may file a report against another boat from which it heard foul language. On the first offense, the penalty is a DNE for the race closest to the offense. Upon a second offense, the penalty is a DNE for all races raced during the day of the offense. Upon the third offense, the penalty is a disqualification from the regatta.

22 OFFICIAL BOATS

Official boats will be identified by a white flag with the letter corresponding to the course area.

23 SUPPORT BOATS

Team leaders, coaches and other support personnel shall stay outside areas where boats are racing from the time of the preparatory signal for the first class to start until all boats have finished or the race committee signals a postponement, general recall or abandonment.

24 TRASH DISPOSAL

Boats shall not put trash in the water. Trash may be placed aboard support and race committee boats.

25 RADIO COMMUNICATION

Except in an emergency, a boat shall neither make radio transmissions while racing nor receive radio communications not available to all boats. This restriction also applies to mobile telephones.

26 PRIZES

Prizes will be given as follows:

Laser

Overall Challenge Trophy	1 st
Open Division	1 st to 3 rd

Laser Radial

Overall Challenge Trophy	1 st
Open Division	1 st to 3 rd

27 DISCLAIMER OF LIABILITY

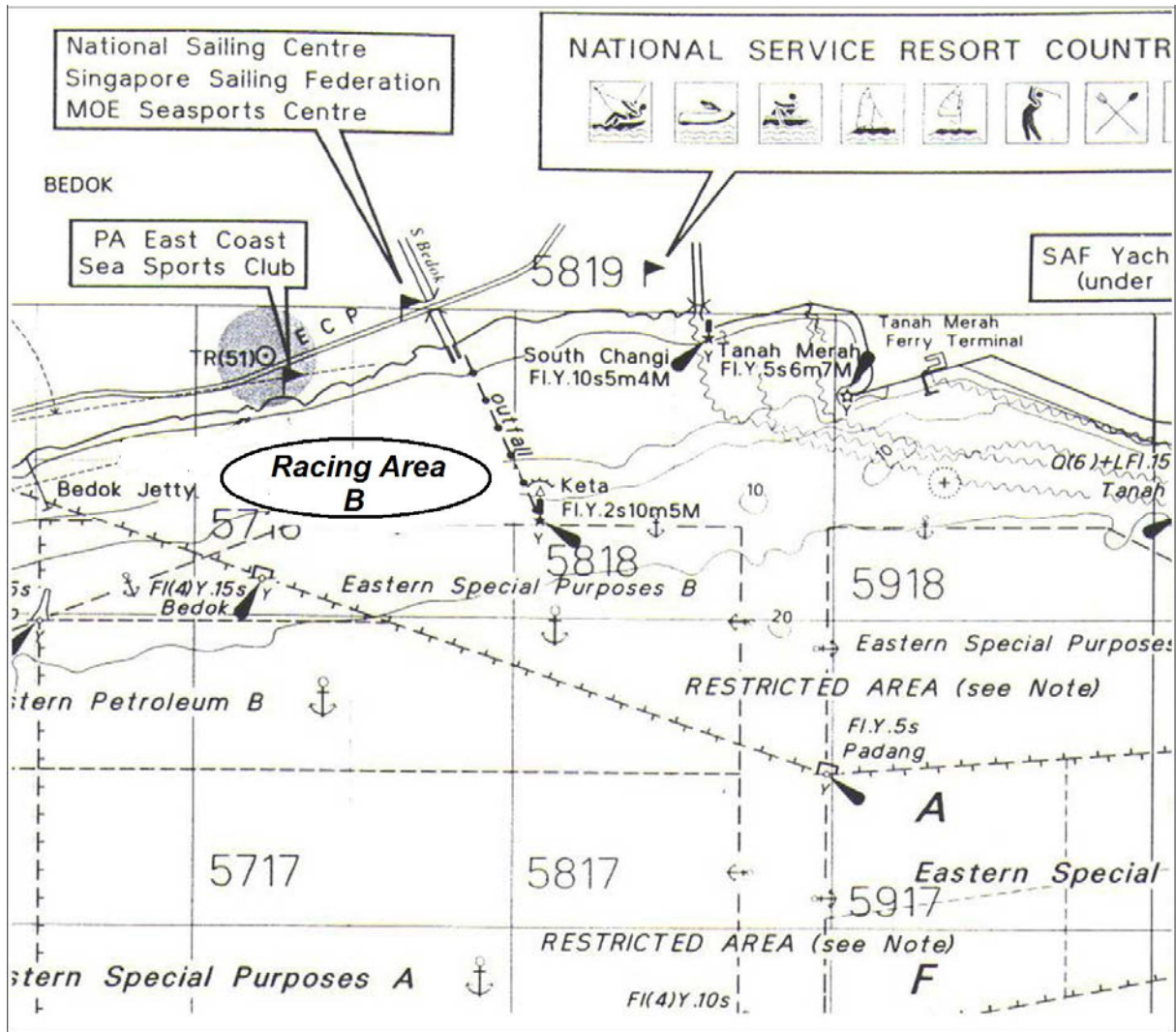
Competitors participate in the regatta entirely at their own risk, See rule 4, Decision to Race. The organising authority will not accept any liability for material damage or personal injury or death sustained in conjunction with or prior to, during, or after the regatta.

28 INSURANCE

All competitors are required to have appropriate insurance coverage.

ATTACHMENT 1

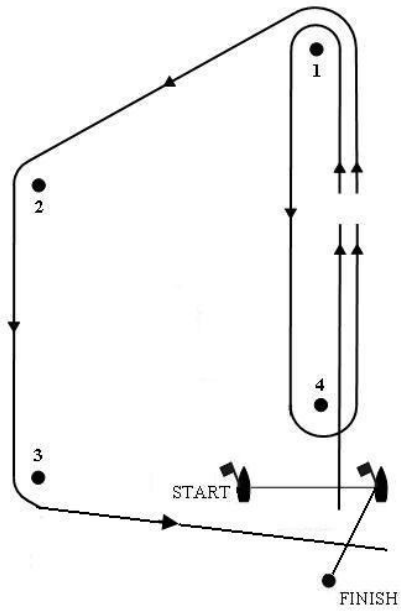
RACING AREA B



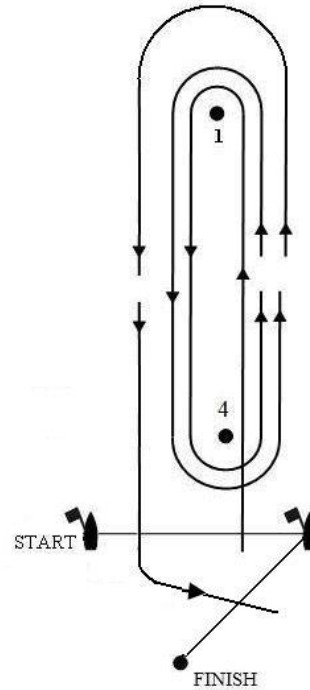
ATTACHMENT 2 - COURSES

RACING AREA – B

Trapezoid Course



Windward/Leeward Course



Course Flag "O1"

S-1-2-3-2-3-F

Course Flag "O2"

S-1-2-3-2-3-2-3-F

Course Flag "I1"

S-1-4-1-2-3-F

Course Flag "I2"

S-1-4-1-4-1-2-3-F

Course "W1"

S-1-4-1-4-F

Course "W2"

S-1-4-1-4-1-4-F