



SINGAPORE OPTIMIST OPEN CHAMPIONSHIP
15 – 19 JUNE 2010
National Sailing Centre, Singapore
Organising Authority: Singapore Sailing Federation

NOTICE OF RACE

1 RULES

- 1.1 The regatta will be governed by the rules as defined in *The Racing Rules of Sailing*.
- 1.2 No national prescriptions will apply.

2 ADVERTISING

Advertising will be restricted to Category C.

3 ELIGIBILITY AND ENTRY

- 3.1 The regatta is open to all boats of the Optimist class who are members of a club affiliated to SingaporeSailing, or in the case of international entrants are members of a club affiliated to their own national authority (MNA).
- 3.2 International entries in the Gold Fleet will be restricted to **a maximum of 35 boats** which will be allocated in accordance with clause 5.
- 3.3 All Singaporean competitors must have at least SOF Opti-Racer certification.
- 3.4 Proof of club membership is required upon submission of entry form. Sailors without valid club membership shall not be eligible to participate in this regatta.
- 3.5 Eligible boats may enter by completing the attached form and sending it, together with the required fee, to

Singapore Sailing Federation
1500 East Coast Parkway
National Sailing Centre
Singapore 468963

Tel: +65 6444 4555

Website: www.sailing.org.sg

by the closing date, **02 June 2010**.

Overseas entrants may submit their entry by email to

info@singaporesailing.org.sg. Payment of entry fees for overseas entrants can be made upon arrival.

- 3.6 Late registration will be closed one day before the regatta date at 1600.
- 3.7 The Organising Authority may accept the late registration at its own discretion and shall be subjected to a late entry fee.

4 FEES

The required fees (inclusive of GST) are as follows:

<u>Class</u>	<u>Fees</u>	<u>Late Entry Fees</u>
Optimist	\$64.20	\$96.30

The fees are non-refundable.

5 FORMAT OF RACING

- 5.1 Optimist Sailors listed in the SingaporeSailing issued Gold Fleet list (being the top 80 ranking places as of Jan 2010) shall sail as one fleet (Gold Fleet) for the entire event. All other sailors in the national ranking shall sail in Silver Fleet (and/or bronze if required) for the entire event.

International Entrants

International entrants who do not appear on the SingaporeSailing national ranking list will be allocated to either the Gold or Silver Fleet at the organizing authority's sole discretion. This will be based upon the International entrants own national ranking and/or previous results history and **will be limited to a maximum of 7 sailors per country for the Gold Fleet.** This number may be increased at the sole discretion of SingaporeSailing upon request from a National Class Association or MNA. Priority of entry into the Gold Fleet will be given to sailors already selected to represent their country in the 2010 IODA World or Asian Championships. Any other foreign entrants from the same country will be allocated to the Silver Fleet. Advice may be sought by the international sailors MNA or National Class Association to aid in the allocation of places to the Gold Fleet.

- 5.2 If the number of entries received for the Optimist Silver Fleet at the close of entries is more than 100, the Organising Committee may decide to have a one start or a qualifying/final series; however, if the fleet is more than 120, the regatta for Silver fleet will consist of a qualifying series and a final series for that class.
- 5.3 For the Silver Fleet qualifying series (if required), the entire fleet will be divided into 4 groups. The seeding of boats into the 4 groups will be based on the current National Ranking where available or another method as determined by the Organising Authority. The seeding will be done as soon as possible after the closing of entries and shall not be subject to protest. This changes rule 60.1(b).
- 5.4 Each race shall consist of 2 groups racing together and where possible each group shall race each other group an equal number of times.

- 5.5 Groups may be started in any order however the Race Committee will attempt to start as follows:

Race No.	Groups	Colours	Race No.	Groups	Colours
Race 1A	1 & 2	White & Brown	Race 1B	3 & 4	Yellow & Pink
Race 2A	2 & 4	Brown & Pink	Race 2B	1 & 3	White & Yellow
Race 3A	1 & 4	White & Pink	Race 3B	2 & 3	Brown & Yellow
Race 4 A	3 & 4	Yellow & Pink	Race 4B	1 & 2	White & Brown
Race 5A	1 & 3	White & Yellow	Race 5B	2 & 4	Brown & Pink

- 5.6 The Group Flags shall be displayed in place of Class Flags. All boats will display a coloured ribbon (corresponding with the colour of their groups) attached securely to the top of their mast or sprit. The organiser will provide these ribbons.
- 5.7 The group flags and colours are:
 Group 1 – White
 Group 2 – Brown
 Group 3 – Yellow
 Group 4 – Pink
- 5.8 When more than 4 groups are required, appropriate measures will be taken.
- 5.9 Boats will be assigned to final-series fleets of Silver, Bronze, Emerald, etc., on the basis of their ranks in the qualifying-series. The final-series fleets will have, as nearly as possible, equal size but so that the Bronze fleet is not larger than the Silver fleet, etc. Boats with the best qualifying-series ranks will race all final-series races in the Silver fleet, boats with the next-best qualifying-series ranks will race in the Bronze fleet, etc.
- 5.10 Any recalculation of qualifying-series ranking after boats have been assigned to final-series fleets will not affect the assignments except that a redress decision may promote a boat to a higher fleet.

6 SCHEDULE OF RACES

- 6.1 Racing is from 15 – 19 June 2010.
- 6.2 The scheduled time for the warning signal of the first race each day is 1100.
- 6.3 There will be no limit to the number of races that may be sailed each day.
- 6.4 On the last day of the regatta no warning signal will be made after 1530.

7 SAILING INSTRUCTIONS

The sailing instructions will be available after the closing date at the National Sailing Centre.

8 VENUE

Attachment 1 shows the location of the racing area.

9 THE COURSES

The diagrams in Attachment 3 show the courses, the order in which marks are to be passed, and the side on which each mark is to be left.

10 PENALTY SYSTEM

10.1 Appendix P will apply as changed by instructions 10.2 and 10.3.

10.2 On the first protest, if a boat is protested after she has finished, she will be given a scoring penalty of 6 points, without a hearing. If her score results in a score worse than DSQ, the penalty will be corresponding to DSQ.

10.3 Rule P2.3 will not apply and rule P2.2 is changed so that it will apply to any protest after the first one.

10.4 Action taken under Appendix P will not be grounds for redress by a competitor.

11 SCORING

11.1 A maximum of 15 races are scheduled.

11.2 When a qualifying series and a final series for the Silver Fleet is organised,

Qualifying Series

(a) At least 5 qualifying races are required to be completed for each group to constitute the qualifying series and to enter the final series.

(b) The qualifying series will be concluded at the end of the racing day on which 5 or more qualifying races have been completed.

(c) When at least 5 qualifying races are sailed, a boat's qualifying score will be the total of her race scores excluding her worst excludable score.

(d) A minimum of 5 qualifying races are required to be completed to constitute a regatta.

Final Series

(e) The final series shall consist of all remaining races not sailed in the qualifying series. All the race scores in the qualifying and final series shall be used in determining the final series score, less any discards allowed.

(f) When 7 or 8 qualifying and final series races (combined) have been completed for a particular fleet, a boat's series score in that fleet shall be the total of her race scores.

(g) When 9 or more qualifying and final series races (combined) have been

completed for a particular fleet, a boat's series score in that fleet shall be the total of her race scores excluding her two worst excludable scores.

(h) The number of final series races need not be equal for all final series groups.

11.3 When no qualifying series is organised, a minimum of 5 races are required to be completed to constitute a series.

(a) When fewer than 9 races have been completed, a boat's series will be the total of her race scores.

(b) When 9 to 11 races have been completed, a boat's series score will be the total of her race scores excluding her worst excludable score.

(c) When 12 or more races have been completed, a boat's series score will be total of her race scores excluding her two worst excludable scores.

11.4 There will be only one final official ranking list for the regatta and for each class. Boats in the gold fleet will rank higher than those in the silver fleet, who shall in turn be ranked higher than those in bronze fleet, etc.

12 SUPPORT BOATS

Support boats shall be identified by a white flag with the letter corresponding to the course area.

13 BOAT STORAGE

Boats shall be kept in their assigned places in the boat park.

14 RADIO COMMUNICATION

Except in an emergency, a boat shall neither make radio transmissions while racing nor receive radio communications not available to all boats. This restriction also applies to mobile telephones.

15 PRIZES

Prizes will be given as follows:

<u>Gold Fleet</u>	1 st to 10 th
Boys Challenge Trophy	1 st Boy
Girls Challenge Trophy	1 st Girl
12 Years old and under	1 st to 3 rd

(Those born in the Year of 1998 and later)

<u>Silver Fleet</u>	1 st to 10 th
<u>Bronze Fleet</u> (If applicable)	1 st to 10 th

16 DISCLAIMER OF LIABILITY

Competitors participated in the regatta entirely at their own risk; see Part 1 Fundamental Rules No. 4, Decision to Race. The organising authority will not accept any liability for material damage or personal injury or death sustained in conjunction with or prior to, during, or after the regatta.

17 INSURANCE

All competitors are required to have appropriate insurance coverage.

18 CHARTER BOAT

A limited number of new and used Optimists and coach boats will be available for overseas entrants. These boats will be issued on first come first serve basis. Reservation of charter boats shall be made by submitting the Boat Charter Form before the event closing date.

In addition to the boat charter fee, a damage deposit of SGD\$200 will be required on receipt of each boat, to be refunded if no damage has occurred. Each team is only required to submit 1 Boat Charter Form, please email/fax the form, together with Entry Form(s) to SingaporeSailing.

OPTIMIST (New XSP)

Charter rates: SGD 80.25 per boat per day + Damage deposit of SGD 200
Charter boat complete with spars and foils only. Please bring your own control lines, paddle, bailer, mainsheet and sail.

OPTIMIST (Used XSP or Winner Mk9)

Charter rates: SGD 53.50 per boat per day + Damage deposit of SGD 200
Charter boat complete with spars and foils only. Please bring your own control lines, paddle, bailer, mainsheet and sail.

COACH BOAT

3.4m tiller inflatable powerboat

Charter rates: SGD 53.50 per boat per day + Damage deposit of SGD 200 (excluding petrol)

Please see Attachment 2 for boat charter form.

18 ACCOMMODATION

The following accommodations are suggested. Please contact the hotels directly for bookings. Participants are advised to book accommodation early as June is peak season.

- Haising Hotel

37 Jalan Besar (Opp. Sim Lim Tower)
Singapore 208801

Tel: +65 6298 1223

(20 minutes away by taxi from NSC)

Reservation Manager: Mr Francis Tan

Email: hs@haising.com.sg

Website: <http://haising.com.sg>

- Grand Mercure Roxy Hotel

50 East Coast Road Roxy Square

Singapore 428769

(10 minutes away by taxi from NSC)

*Please quote event name during booking to enjoy special rates

Tel: +65 63448000

Reservation Manager: Ms Nora Busra

Email: H3610-SL2@accor.com

Website: <http://www.mercure.com/gb/hotel-3610-grand-mercure-roxy-hotel/index.shtml>

- Paramount Hotel

25 Marine Parade

Singapore 449 536

(10 minutes away by taxi from NSC)

*Please quote event name during booking to enjoy special rates

Tel: +65 63442200

Reservation Manager: Ms Isabelita Paas

Email: Isabelita.paas@ytchotels.com.sg

Website: <https://www.ytchotels.com.sg/sp-ytccparam>

- Fernloft Backpacker Hostel

693A East Coast Road

Singapore 459058

(15 minutes away by taxi from NSC)

Tel: +65 9875 0875 / +65 6449 9066

Reservation Manager: Ms April

Email: enquiry@fernloft.com

Website: <http://www.fernloft.com/EastCoast.html>

19 FURTHER INFORMATION

For further information, please contact:

Singapore Sailing Federation

1500 East Coast Parkway

National Sailing Centre

Singapore 468963

Tel: +65 6444 4555

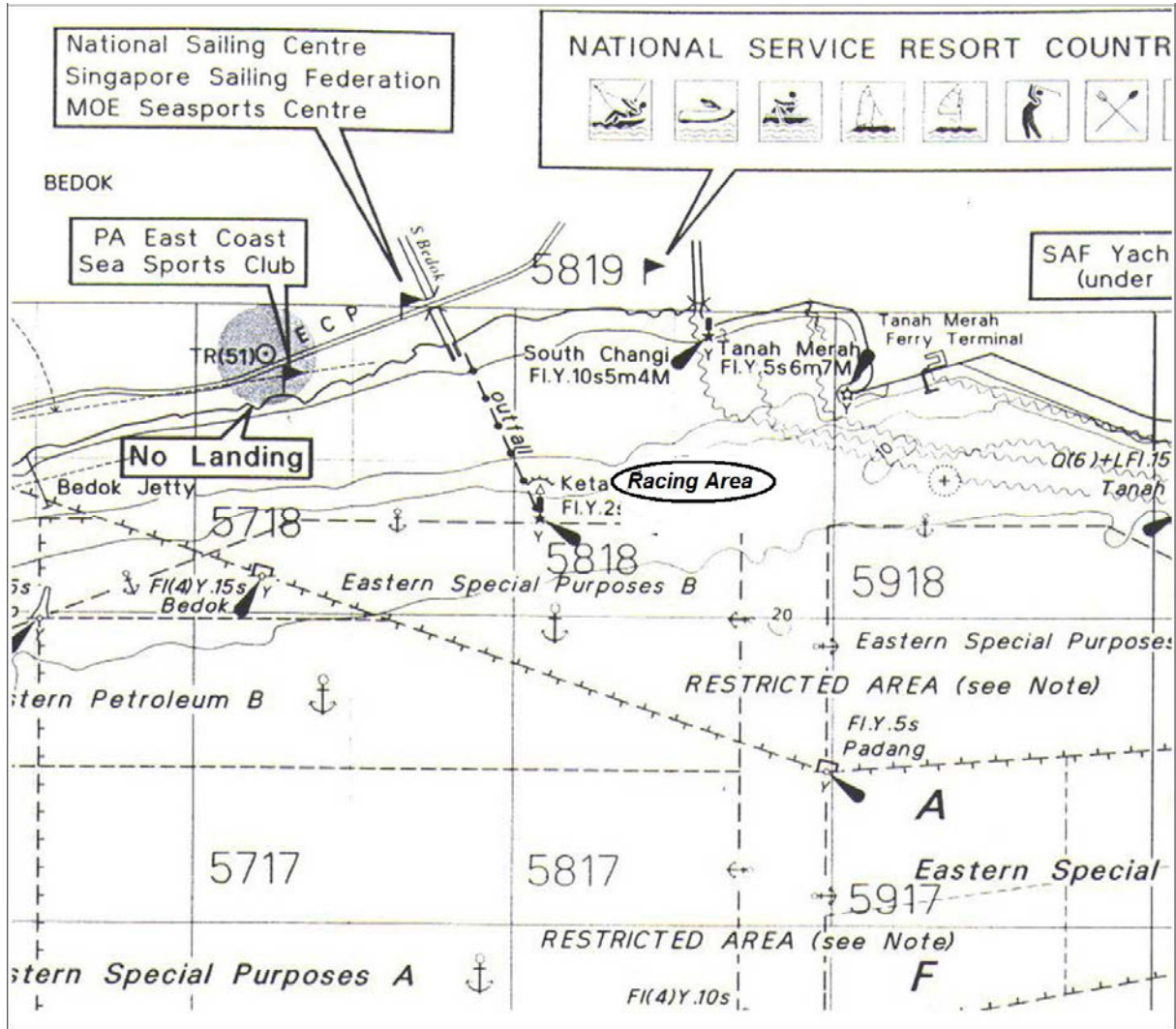
Fax: +65 6448 0485

Website: www.sailing.org.sg

Email: info@singaporesailing.org.sg

ATTACHMENT 1

RACING AREA



ATTACHMENT 2

Optimist Open Championship 15 – 19 June 2010

BOAT CHARTER FORM FOR OVERSEAS PARTICIPANTS

Name of Designated Contact Person: _____

Email address: _____

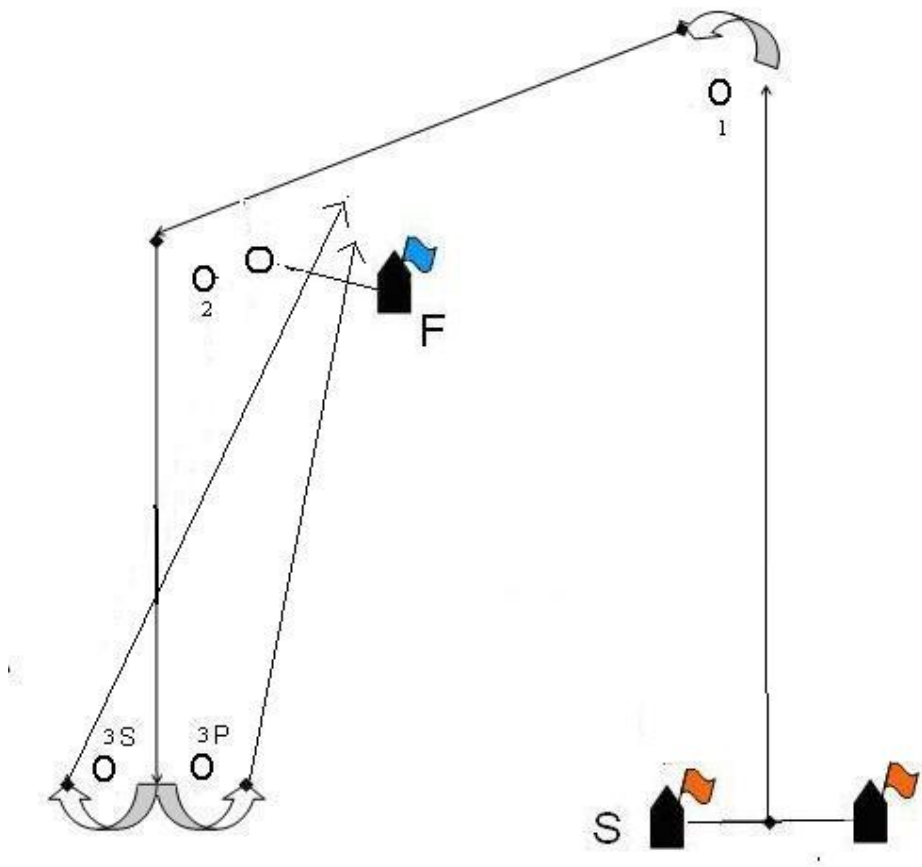
Optimist Charter

Type of Boat	No. of Boats	No. of Days	Requested Date (from)	Charter Rates Per Boat Per Day	Amount
New Optimist				SGD 80.25	
Used Optimist				SGD 53.50	
3.4m Coachboat (Excl. Petrol)				SGD 53.50	
Total (SGD)					

Damage Deposit – To be refunded if no damage occurs (In SGD Cash only)

Type of Boat	No. of Boats	Damage Deposit Per Boat	Amount
Optimist		SGD 200	
3.4m Coachboat (Excl. Petrol)		SGD 200	
Total Deposit			

ATTACHMENT 3 - COURSE



Worlds Format

S - 1 - 2 - 3S / 3P - F



SingaporeSailing

**Optimist Open Championship: 15 – 19 June 2010
National Sailing Centre
Entry Form**

Attn: Singapore Sailing Federation
1500 East Coast Parkway
National Sailing Centre
Singapore 468963

Tel: +65 6444 4555
Website: www.sailing.org.sg
Email: info@singaporesailing.org.sg

Helm's Name: _____
(Enter full name)

NRIC/Passport: _____

Sail No: _____

Nationality: _____

School: _____

Club: _____

Home Addr: _____

Date of Birth: _____

Gender: _____

Tel No: _____

Email: _____

Mobile: _____

Gold Fleet Silver Fleet (for Singaporean entrants only)

Current National Ranking: _____ (for foreign entrants only)

Entry Fees

The entry fees (inclusive of GST) will be non-refundable:

	<u>By 02 June</u>	<u>After 02 June</u>
Optimist	\$64.20	\$96.30

Enclosed is S\$_____ being payment for the entry fee.

Declaration by competitor

I/We agree to be bound by the Racing Rules of Sailing.

I/We acknowledge and accept the risks associated with participation in the regatta and waive all rights against and release the Organising Authority in respect of any loss of life and injury to persons, or loss of or damage to property, suffered in connection therewith; and acknowledge that participation in the regatta is entirely at my/our own risk and responsibility.

Helm's
Signature

Parent's Signature
(Required for sailors 21 years old & below)

CANCELLATION POLICY - There will be no refund of regatta entry fees. Refund will only be given if the regatta is cancelled.